

SHAWN HAGERTY, Bar No. 182435  
shawn.hagerty@bbklaw.com  
BEST BEST & KRIEGER LLP  
655 West Broadway, 15th Floor  
San Diego, California 92101  
Telephone: (619) 525-1300  
Facsimile: (619) 233-6118

Exempt From Filing Fees Pursuant to  
Cal. Gov't Code § 6103

CHRISTOPHER M. PISANO, Bar No. 192831  
christopher.pisano@bbklaw.com  
SARAH CHRISTOPHER FOLEY, Bar No. 277223  
sarah.foley@bbklaw.com  
PATRICK D. SKAHAN, Bar No. 286140  
patrick.skahan@bbklaw.com  
BEST BEST & KRIEGER LLP  
300 South Grand Avenue, 25th Floor  
Los Angeles, California 90071  
Telephone: (213) 617-8100  
Facsimile: (213) 617-7480

Attorneys for Respondent and Cross-Complainant  
CITY OF SAN BUENAVENTURA

SUPERIOR COURT OF THE STATE OF CALIFORNIA  
COUNTY OF LOS ANGELES

SANTA BARBARA CHANNELKEEPER, a  
California non-profit corporation,

Petitioner,

v.

STATE WATER RESOURCES CONTROL  
BOARD, etc., et al.,

Respondents.

CITY OF SAN BUENAVENTURA, etc.,

Cross-Complainant

v.

DUNCAN ABBOTT, an individual, et al.

Cross-Defendants.

Case No. 19STCP01176

Judge: Honorable William F. Highberger

NOTICE OF HEARING ON ORDER TO  
SHOW CAUSE RE WATERSHED AND  
BASIN BOUNDARIES; DECLARATION  
OF SARAH CHRISTOPHER FOLEY IN  
SUPPORT THEREOF

Date: December 9, 2021

Time: 2:30 p.m.

Dept: 10

Action Filed: Sept. 19, 2014

Trial Date: Feb. 14, 2022

1 TO ALL PARTIES AND THEIR COUNSEL OF RECORD:

2 PLEASE TAKE NOTICE THAT on December 9, 2021, the Court will hold an Order to  
3 Show Cause (OSC) hearing as to why the Court should not issue an order establishing (1) the  
4 boundaries of the Ventura River Watershed (Watershed), as defined by the U.S. Geological  
5 Survey (USGS) National Hydrography Dataset (NHD) and Watershed Boundary Dataset (WBD)  
6 as 10-digit Hydrologic Unit Code (HUC) 1807010101 – Ventura River Watershed and (2) the  
7 boundaries of the Watershed's four groundwater basins, as defined by the California's  
8 Department of Water Resources (DWR) in Bulletin 118, in advance of the Phase 1 Trial.

9 The OSC hearing will take place on December 9, 2021, at 2:30 p.m. in Department S10 of  
10 the Los Angeles County Superior Court, which is located at 312 North Spring Street, Los  
11 Angeles, CA 90012. The Court ordered the City of San Buenaventura to provide Notice of the  
12 OSC hearing.

13 PLEASE TAKE FURTHER NOTICE that all parties who want to attend the hearing on  
14 the OSC may appear remotely via the Court's remote appearance program, LA Court Connect.  
15 Parties may sign up for a remote appearance by going to <https://my.lacourt.org/laccwelcome>, or  
16 calling (213) 830-0400.

17 The court can issue orders on the following two questions of Phase 1 Trial in advance of  
18 Phase 1 Trial:

19 Issue Number 1: What are the boundaries of the Ventura River Watershed?

20 Answer: USGS defines the Ventura River Watershed boundaries in its NHD and  
21 companion WBD as HUC 1807010101 – Ventura River Watershed, and the Court should order  
22 that these are the boundaries in this case.

23 Issue Number 2: What are the boundaries of the four groundwater basins in the Ventura  
24 River Watershed?

25 Answer: The boundaries four groundwater basins in the Ventura River Watershed are  
26 defined in DWR's Bulletin 118, and the Court should order that these are the boundaries in this  
27 case.

1 DISCUSSION

2 1. Ventura River Watershed Boundaries

3 The National Hydrography Dataset (NHD)<sup>1</sup> and companion Watershed Boundary Dataset  
4 (WBD)<sup>2</sup> are used to portray the flow of surface water on the National Map, which is maintained  
5 by USGS.<sup>3</sup> ([https://water.ca.gov/Programs/All-Programs/National-Hydrography-Dataset-](https://water.ca.gov/Programs/All-Programs/National-Hydrography-Dataset-Stewardship)  
6 [Stewardship](https://water.ca.gov/Programs/All-Programs/National-Hydrography-Dataset-Stewardship).) DWR is the steward for NHD and WBD in California. (*Id.*) DWR has declared  
7 that NHD's WBD is the authoritative dataset of California's watersheds. (*Id.*) State agencies,  
8 such as the State Water Resources Control Board and the Regional Water Quality Control Boards,  
9 use the WBD to define watersheds in California.

10 The Ventura River Watershed, located in Ventura and Santa Barbara Counties, is a fan-  
11 shaped catchment of approximately 226 square miles that drains water from land containing  
12 uplands at over 6,000 feet in elevation and extends down to sea level. The Court should issue an  
13 order defining the boundaries of the Ventura River Watershed as delineated by the USGS in its  
14 NHD and WBD as HUC 1807010101 – Ventura River Watershed. The parties are currently  
15 negotiating a proposed illustrative-only map of the Watershed showing the boundaries as  
16 delineated by the USGS NHD and WBD geographic information system (GIS) data, and if they  
17 can agree, the City will submit an illustrative map in advance of the OSC hearing. (See  
18 Declaration of Sarah Christopher Foley (Foley Decl.).)

19 2. Groundwater Basin Boundaries

20 DWR's California's Groundwater (Bulletin 118) is the State's official publication on the  
21 occurrence and nature of groundwater in California. ([https://water.ca.gov/programs/groundwater-](https://water.ca.gov/programs/groundwater-management/bulletin-118)  
22 [management/bulletin-118](https://water.ca.gov/programs/groundwater-management/bulletin-118).) The latest version of the report, California's Groundwater - Update  
23 2020 was publicly released on November 16, 2021. (<https://data.cnra.ca.gov/dataset/california-s->  
24

25 <sup>1</sup> Available at [https://www.usgs.gov/core-science-systems/ngp/national-hydrography/national-hydrography-](https://www.usgs.gov/core-science-systems/ngp/national-hydrography/national-hydrography-dataset?qt-science_support_page_related_con=0#qt-science_support_page_related_con)  
26 [dataset?qt-science\\_support\\_page\\_related\\_con=0#qt-science\\_support\\_page\\_related\\_con](https://www.usgs.gov/core-science-systems/ngp/national-hydrography/national-hydrography-dataset?qt-science_support_page_related_con=0#qt-science_support_page_related_con)

27 <sup>2</sup> Available at [https://www.usgs.gov/core-science-systems/ngp/national-hydrography/watershed-boundary-dataset?qt-](https://www.usgs.gov/core-science-systems/ngp/national-hydrography/watershed-boundary-dataset?qt-science_support_page_related_con=4#qt-science_support_page_related_con)  
28 [science\\_support\\_page\\_related\\_con=4#qt-science\\_support\\_page\\_related\\_con](https://www.usgs.gov/core-science-systems/ngp/national-hydrography/watershed-boundary-dataset?qt-science_support_page_related_con=4#qt-science_support_page_related_con)

<sup>3</sup> An interactive version of the USGS National Map, including the NHD and WBD datasets, is available at  
<https://apps.nationalmap.gov/viewer/>.

1 [groundwater-bulletin-118-archive](#).) Bulletin 118 defines the lateral boundaries and describes the  
2 hydrologic characteristics of California’s groundwater basins. In conjunction with the release of  
3 Update 2020, DWR has compiled a comprehensive list of the official “basin boundary  
4 descriptions” for all of California’s 515 groundwater basins. ([https://data.cnra.ca.gov/dataset/ca-  
5 gw-basin-boundary-descriptions](https://data.cnra.ca.gov/dataset/ca-gw-basin-boundary-descriptions).) These descriptions were originally developed by DWR as part  
6 of Bulletin 118 – Update 2003 and have been updated for 2020. (*Id.*) The Update 2020 basin  
7 boundary descriptions for the four groundwater basins in the Watershed are available at  
8 <https://data.cnra.ca.gov/dataset/bbd4>.

9 The original basin descriptions developed for Bulletin 118 – Update 2003 also included  
10 summaries of the hydrologic and hydrogeologic setting, groundwater storage capacity and water  
11 budget, groundwater level and quality trends, well yields, basin management, and references.  
12 These Bulletin 118 – Update 2003 descriptions are now referred to as “basin reports.” Ventura  
13 previously provided these basin reports to the Court and to the parties, and they are available at  
14 <https://data.cnra.ca.gov/dataset/bulletin-118-update-2003-basin-reports>.<sup>4</sup>

15 Under the streamlined adjudication statute, basins are defined to have the same meaning  
16 as Water Code section 10721, subdivision (b), which defines them as basins or subbasins  
17 identified and defined in Bulletin 118. (Code Civ. Proc. § 832, subd. (a).) The streamlined  
18 adjudication statute generally provides that the boundaries set by Bulletin 118 should be used as  
19 the boundaries in adjudications. (See Code Civ. Proc. § 841, subd. (a).)

20 The Court should issue an order establishing that there are four DWR-defined  
21 groundwater basins and subbasins (basin numbers 4-1, 4-2, 4-3.01, and 4-3.02) located wholly or  
22 partially within the Watershed, and their lateral boundaries are defined by DWR’s Bulletin 118 as  
23 more fully set forth below.

---

24  
25  
26 <sup>4</sup> The Bulletin 118 – Update 2003 basin report for the Upper Ojai Basin is attached as Exhibit 1b to the Foley Decl.  
27 The Bulletin 118 – Update 2003 basin report for the Ojai Basin is attached as Exhibit 2b to the Foley Decl. The  
28 Bulletin 118 – Update 2003 basin report for the Upper Ventura Basin is attached as Exhibit 3b. The Bulletin 118 –  
Update 2003 basin report for the Lower Ventura Basin is attached as Exhibit 4b to the Foley Decl.

1. 4-1 Upper Ojai Valley Groundwater Basin (Upper Ojai Basin). The Bulletin 118 – Update 2020 basin boundaries description, including a map, for the Upper Ojai Basin is attached as Exhibit 1a to the Foley Decl.
2. 4-2 Ojai Valley Groundwater Basin (Ojai Basin). The Bulletin 118 – Update 2020 basin boundaries description, including a map, for the Ojai Basin is attached as Exhibit 2a to the Foley Decl.
3. 4-3.01 Ventura River Valley – Upper Ventura River Subbasin (Upper Ventura Basin). The Bulletin 118 – Update 2020 basin boundaries description, including a map, for the Upper Ventura Basin is attached hereto as Exhibit 3a.
4. 4-3.02 Ventura River Valley – Lower Ventura River Subbasin (Lower Ventura Basin).<sup>5</sup> The Bulletin 118 – Update 2020 basin boundaries description, including a map, for the Lower Ventura Basin is attached as Exhibit 4a to the Foley Decl.

Dated: November 23, 2021

BEST BEST & KRIEGER LLP

By: 

SHAWN HAGERTY  
CHRISTOPHER M. PISANO  
SARAH CHRISTOPHER FOLEY  
PATRICK D. SKAHAN  
Attorneys for Respondent and  
Cross-Complainant  
CITY OF SAN BUENAVENTURA

---

<sup>5</sup> The Court is only making a determination as to the lateral boundaries of the groundwater basins as defined in Bulletin 118 and is not making any specific determination as to the definition in Bulletin 118 regarding the depth or definable bottom, if any, of the Lower Ventura Basin. The Court is expressly reserving issues raised by Cross-Defendant Aera Energy LLC regarding the connectivity of the Lower Ventura Basin with geologic formations employed for oil and gas-related operations and the “exempt aquifer” below the Lower Ventura Basin as defined by the California Department of Conservation Geologic Energy Management Division and the U.S. Environmental Protection Agency under the federal Safe Drinking Water Act. Such questions shall be reserved for future phases of the trial, if not otherwise addressed by stipulation of the parties.

1                    DECLARATION OF SARAH CHRISTOPHER FOLEY IN SUPPORT OF NOTICE OF  
2                    HEARING OF ORDER TO SHOW CAUSE RE ESTABLISHING WATERSHED AND BASIN  
3                    BOUNDARIES

4                    I, Sarah Christopher Foley, declare as follows:

5                    1.        I am an attorney at law licensed to practice before all courts in the State of  
6 California. I am a partner with the law firm Best Best & Krieger, LLP (“BBK”), counsel of  
7 record for Defendant and Cross-Complainant, City of San Buenaventura (“City”) in the above-  
8 captioned action. If called upon to testify about the facts set forth below, I could and would do so  
9 competently.

10                  2.        The parties are currently negotiating a proposed illustrative-only map of the  
11 Watershed showing the boundaries as delineated by the USGS NHD and WBD geographic  
12 information system (GIS) data, and if they can agree, the City will submit an illustrative map in  
13 advance of the OSC hearing.

14                  3.        Attached hereto as Exhibit 1a is a true and correct copy of Bulletin 118 – Update  
15 2020, basin boundaries description for the 4-1 Upper Ojai Valley Groundwater Basin, available at  
16 [https://data.cnra.ca.gov/dataset/34cdc58b-3892-400b-9234-30b1ee0e7d8b/resource/fce2ac1e-](https://data.cnra.ca.gov/dataset/34cdc58b-3892-400b-9234-30b1ee0e7d8b/resource/fce2ac1e-1d06-494b-94ee-ceb07bf3caee/download/4-001_upper-ojai-valley_basinboundarydescription.pdf)  
17 [1d06-494b-94ee-ceb07bf3caee/download/4-001\\_upper-ojai-valley\\_basinboundarydescription.pdf](https://data.cnra.ca.gov/dataset/34cdc58b-3892-400b-9234-30b1ee0e7d8b/resource/fce2ac1e-1d06-494b-94ee-ceb07bf3caee/download/4-001_upper-ojai-valley_basinboundarydescription.pdf)

18                  4.        Attached hereto as Exhibit 1b is a true and correct copy of Bulletin 118 – Update  
19 2003, basin report for the 4-1 Upper Ojai Valley Groundwater Basin, available at  
20 [https://data.cnra.ca.gov/dataset/12e534ff-f604-4ba9-82db-486d81e082ff/resource/8596af7b-9a92-](https://data.cnra.ca.gov/dataset/12e534ff-f604-4ba9-82db-486d81e082ff/resource/8596af7b-9a92-4a4a-9411-e9038aaa1595/download/b118_2003_basindescription_4_001.pdf)  
21 [4a4a-9411-e9038aaa1595/download/b118\\_2003\\_basindescription\\_4\\_001.pdf](https://data.cnra.ca.gov/dataset/12e534ff-f604-4ba9-82db-486d81e082ff/resource/8596af7b-9a92-4a4a-9411-e9038aaa1595/download/b118_2003_basindescription_4_001.pdf)

22                  5.        Attached hereto as Exhibit 2a is a true and correct copy of Bulletin 118 – Update  
23 2020, basin boundaries description for the 4-2 Ojai Valley Groundwater Basin, available at  
24 [https://data.cnra.ca.gov/dataset/34cdc58b-3892-400b-9234-30b1ee0e7d8b/resource/e31251c6-](https://data.cnra.ca.gov/dataset/34cdc58b-3892-400b-9234-30b1ee0e7d8b/resource/e31251c6-8c95-47fe-95d5-79f589318326/download/4-002_ojai-valley_basinboundarydescription.pdf)  
25 [8c95-47fe-95d5-79f589318326/download/4-002\\_ojai-valley\\_basinboundarydescription.pdf](https://data.cnra.ca.gov/dataset/34cdc58b-3892-400b-9234-30b1ee0e7d8b/resource/e31251c6-8c95-47fe-95d5-79f589318326/download/4-002_ojai-valley_basinboundarydescription.pdf)

26                  6.        Attached hereto as Exhibit 2b is a true and correct copy of Bulletin 118 – Update  
27 2003, basin report for the 4-2 Ojai Valley Groundwater Basin, available at  
28

1 [https://data.cnra.ca.gov/dataset/12e534ff-f604-4ba9-82db-486d81e082ff/resource/95e8d538-](https://data.cnra.ca.gov/dataset/12e534ff-f604-4ba9-82db-486d81e082ff/resource/95e8d538-6b62-4157-a12c-3a3c3ed9fe61/download/b118_2003_basindescription_4_002.pdf)  
2 [6b62-4157-a12c-3a3c3ed9fe61/download/b118\\_2003\\_basindescription\\_4\\_002.pdf](https://data.cnra.ca.gov/dataset/12e534ff-f604-4ba9-82db-486d81e082ff/resource/95e8d538-6b62-4157-a12c-3a3c3ed9fe61/download/b118_2003_basindescription_4_002.pdf)

3 7. Attached hereto as Exhibit 3a is a true and correct copy of Bulletin 118 – Update  
4 2020, basin boundaries description for the 4-3.01 Ventura River Valley – Upper Ventura River  
5 Subbasin, available at

6 [https://data.cnra.ca.gov/dataset/34cdc58b-3892-400b-9234-30b1ee0e7d8b/resource/0408135f-](https://data.cnra.ca.gov/dataset/34cdc58b-3892-400b-9234-30b1ee0e7d8b/resource/0408135f-0a5d-47ea-bef4-d82d9221608d/download/4-003.01_ventura-river-valley_upper-ventura-river_basinboundarydescription.pdf)  
7 [0a5d-47ea-bef4-d82d9221608d/download/4-003.01\\_ventura-river-valley\\_upper-ventura-](https://data.cnra.ca.gov/dataset/34cdc58b-3892-400b-9234-30b1ee0e7d8b/resource/0408135f-0a5d-47ea-bef4-d82d9221608d/download/4-003.01_ventura-river-valley_upper-ventura-river_basinboundarydescription.pdf)  
8 [river\\_basinboundarydescription.pdf](https://data.cnra.ca.gov/dataset/34cdc58b-3892-400b-9234-30b1ee0e7d8b/resource/0408135f-0a5d-47ea-bef4-d82d9221608d/download/4-003.01_ventura-river-valley_upper-ventura-river_basinboundarydescription.pdf)

9 8. Attached hereto as Exhibit 3b is a true and correct copy of Bulletin 118 – Update  
10 2003, basin report for the 4-3.01 Ventura River Valley – Upper Ventura River Subbasin, available  
11 at

12 [https://data.cnra.ca.gov/dataset/12e534ff-f604-4ba9-82db-486d81e082ff/resource/cae7b2eb-a893-](https://data.cnra.ca.gov/dataset/12e534ff-f604-4ba9-82db-486d81e082ff/resource/cae7b2eb-a893-4cef-acf0-aecea1ee5c9f/download/b118_2003_basindescription_4_003_01.pdf)  
13 [4cef-acf0-aecea1ee5c9f/download/b118\\_2003\\_basindescription\\_4\\_003\\_01.pdf](https://data.cnra.ca.gov/dataset/12e534ff-f604-4ba9-82db-486d81e082ff/resource/cae7b2eb-a893-4cef-acf0-aecea1ee5c9f/download/b118_2003_basindescription_4_003_01.pdf)

14 9. Attached hereto as Exhibit 4a is a true and correct copy of Bulletin 118 – Update  
15 2020, basin boundaries description for the 4-3.02 Ventura River Valley – Lower Ventura River  
16 Subbasin, available at

17 [https://data.cnra.ca.gov/dataset/34cdc58b-3892-400b-9234-30b1ee0e7d8b/resource/8ae9e2a0-](https://data.cnra.ca.gov/dataset/34cdc58b-3892-400b-9234-30b1ee0e7d8b/resource/8ae9e2a0-a720-4e45-82c1-7004f41d645f/download/4-003.02_ventura-river-valley_lower-ventura-river_basinboundarydescription.pdf)  
18 [a720-4e45-82c1-7004f41d645f/download/4-003.02\\_ventura-river-valley\\_lower-ventura-](https://data.cnra.ca.gov/dataset/34cdc58b-3892-400b-9234-30b1ee0e7d8b/resource/8ae9e2a0-a720-4e45-82c1-7004f41d645f/download/4-003.02_ventura-river-valley_lower-ventura-river_basinboundarydescription.pdf)  
19 [river\\_basinboundarydescription.pdf](https://data.cnra.ca.gov/dataset/34cdc58b-3892-400b-9234-30b1ee0e7d8b/resource/8ae9e2a0-a720-4e45-82c1-7004f41d645f/download/4-003.02_ventura-river-valley_lower-ventura-river_basinboundarydescription.pdf)

20 10. Attached hereto as Exhibit 4b is a true and correct copy of Bulletin 118 – Update  
21 2003, basin report for the 4-3.02 Ventura River Valley – Lower Ventura River Subbasin,  
22 available at

23 [https://data.cnra.ca.gov/dataset/12e534ff-f604-4ba9-82db-486d81e082ff/resource/134be84f-c4cd-](https://data.cnra.ca.gov/dataset/12e534ff-f604-4ba9-82db-486d81e082ff/resource/134be84f-c4cd-418b-a142-508303ddd298/download/b118_2003_basindescription_4_003_02.pdf)  
24 [418b-a142-508303ddd298/download/b118\\_2003\\_basindescription\\_4\\_003\\_02.pdf](https://data.cnra.ca.gov/dataset/12e534ff-f604-4ba9-82db-486d81e082ff/resource/134be84f-c4cd-418b-a142-508303ddd298/download/b118_2003_basindescription_4_003_02.pdf)

1 I declare under the penalty of perjury pursuant to the laws of the State of California that  
2 the foregoing is true and correct.

3 Executed on November 23, 2021 in New Orleans, Louisiana.  
4  
5  
6

7   
SARAH CHRISTOPHER FOLEY



**EXHIBIT 1a**

**EXHIBIT 1a**

# 4-001 UPPER OJAI VALLEY

## Basin Boundaries Description

2003

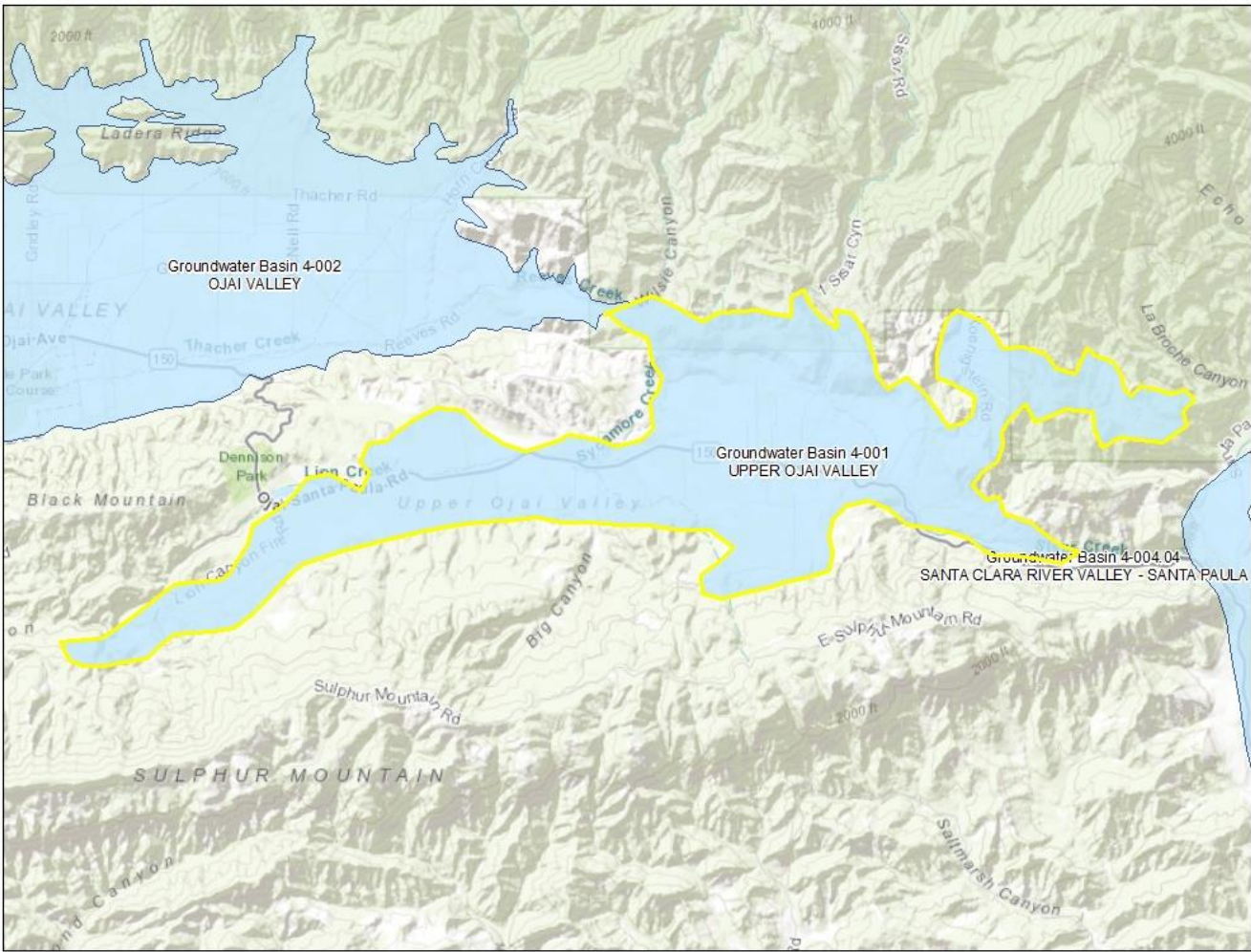
- County: Ventura
- Surface Area: 3,800 acres (5.9 square miles)

### Summary

The Upper Ojai Valley Groundwater basin is bounded by the Ojai Valley Groundwater Basin on the north, the Topatopa Mountains on the east, Sulfur Mountain on the south, and near impermeable rocks of the Santa Ynez Mountains elsewhere. The valley is drained westward by Lion Canyon into San Antonio Creek and eastward by Sisar Creek to Santa Paula Creek.

# Map

## 4-001 – OJAI VALLEY



[Map Link](#)

## References

This table contains the reference listings for the citations noted in the Summary. Each reference contains the name of the reference and the publication date. For more information, email [sgmps@water.ca.gov](mailto:sgmps@water.ca.gov).

Citation	Pub Date

**EXHIBIT 1b**

**EXHIBIT 1b**

## Upper Ojai Valley Groundwater Basin

- Groundwater Basin Number: 4-1
- County: Ventura
- Surface Area: 3,800 acres (5.9 square miles)

### Basin Boundaries and Hydrology

The Upper Ojai Valley Groundwater basin is bounded by the Ojai Valley Groundwater Basin on the north, the Topatopa Mountains on the east, Sulfur Mountain on the south, and near impermeable rocks of the Santa Ynez Mountains elsewhere. The valley is drained westward by Lion Canyon into San Antonio Creek and eastward by Sisar Creek to Santa Paula Creek. Average annual precipitation ranges from 24 to 28 inches.

### Hydrogeologic Information

#### ***Water Bearing Formations***

Groundwater in the basin is found chiefly in Holocene and Pleistocene age alluvium that averages about 60 feet thick and reaches a maximum of about 300 feet thick near Sisar Creek (CSWRB 1953). The average specific yield of the alluvium is estimated at 8 percent (CSWRB 1953). Minor groundwater is found in fractures in the Tertiary sediments underlying the alluvium.

#### ***Restrictive Structures***

A surface and groundwater divide is found in the eastern part of the basin the separates groundwater flow westward toward San Antonio Creek and eastward toward Santa Paula Creek.

#### ***Recharge Areas***

The chief source of recharge in the basin is derived from percolation of precipitation (Panaro 2000). Other minor recharge contributions include irrigation return and underflow from the fractured rock beneath the basin (Panaro 2000).

#### ***Groundwater Level Trends***

Hydrographs show groundwater levels that fluctuate seasonally by about 10 to 20 feet during 1992 through 1999. The groundwater levels return to about the same elevation every year, consistent with a small basin recharged chiefly by annual precipitation. Groundwater in the eastern part of the basin moves eastward toward Sisar Creek and in the western part of the basin moves westward toward Lion Canyon.

#### ***Groundwater Storage***

**Groundwater Storage Capacity.** The total storage capacity is estimated to be 6,000 af (DWR 1975) and 5,681 af (Panaro 2000).

**Groundwater in Storage.** The basin is estimated to have been 70 percent full in 1999 (Panaro 2000), suggesting about 3,980 af of groundwater in storage.

### **Groundwater Budget (Type A)**

Natural recharge into the basin is estimated to be 400 af/yr (DWR 1975). Recharge into the basin is estimated to be 320 af/yr from return irrigation flow and about 600 af/yr from underflow (Panaro 2000). Pumping in 1999 was estimated to be less than 700 af (Panaro 2000).

### **Groundwater Quality**

**Characterization.** Groundwater character is calcium-sodium bicarbonate in the western part of the basin and calcium sulfate in the eastern part of the basin. Analyses of water from 12 wells sampled during 1951 and 1952 show an average TDS content of 707 mg/L with a range of 438 to 1,249 mg/L (DWR 1959). Water from one public supply well shows a TDS concentration of 500 mg/L.

**Impairments.** High boron concentrations are found in groundwater in the southern part of the basin (DWR 1959). Locally, sodium chloride waters with TDS concentrations ranging from 2,000 to 3,000 mg/L are found in the eastern part of the basin (DWR 1959). High nitrate, sulfate, iron, and chloride concentrations have been reported for groundwater in the basin (Panaro 2000).

### **Water Quality in Public Supply Wells**

Constituent Group <sup>1</sup>	Number of wells sampled <sup>2</sup>	Number of wells with a concentration above an MCL <sup>3</sup>
Inorganics – Primary	1	0
Radiological	1	0
Nitrates	1	0
Pesticides	1	0
VOCs and SVOCs	1	0
Inorganics – Secondary	1	1

<sup>1</sup> A description of each member in the constituent groups and a generalized discussion of the relevance of these groups are included in *California's Groundwater – Bulletin 118* by DWR (2003).

<sup>2</sup> Represents distinct number of wells sampled as required under DHS Title 22 program from 1994 through 2000.

<sup>3</sup> Each well reported with a concentration above an MCL was confirmed with a second detection above an MCL. This information is intended as an indicator of the types of activities that cause contamination in a given basin. It represents the water quality at the sample location. It does not indicate the water quality delivered to the consumer. More detailed drinking water quality information can be obtained from the local water purveyor and its annual Consumer Confidence Report.

## Well Production characteristics

Well yields (gal/min)		
Municipal/Irrigation	Range: 10 – 200 gal/min	Average: 50 gal/min (CSWRB 1953), 20-50 gal/min (Panaro 2000)
Total depths (ft)		
Domestic	Range:	Average:
Municipal/Irrigation	Range:	Average:

## Active Monitoring Data

Agency	Parameter	Number of wells /measurement frequency
Ventura County Water Resources Department	Groundwater levels	4
Department of Health Services and cooperators	Title 22 water quality	1

## Basin Management

Groundwater management:

Water agencies

Public	Ventura County Public Works Agency
Private	Southern California Water Company

## References Cited

- California Department of Water Resources (DWR). 1959. *Water Quality and Water Quality Problems, Ventura County*. Bulletin 75. Two Volumes. 195 p.
- \_\_\_\_\_. 1975. *California's ground water*. Bulletin 118. 135 p.
- California State Water Resources Board (CSWRB). 1953. *Ventura County Investigation*. Bulletin 12. Two Volumes.
- Panaro, D. 2000. Fox Canyon Groundwater Management Agency: Written Communication to R.R. Davis (DWR), March 21, 2000.
- Southern California Water Company (SCWC). 2001. *Water Quality Report*. <http://www.aswater.com/2kWQRpts/Ojai.PDF> (March 2002).
- Ventura County Public Works Agency (VCPWA). 1996. *Ventura County Groundwater Quality Assessment Report*. 57 p.
- \_\_\_\_\_. 2002. "Ventura County Groundwater Basins." <http://www.ventura.org/vcpwa/wre/wrd/pages/BASINS.htm> (March 2002).

## Additional References

California Department of Public Works, Division of Water Resources (DPW). 1933. *Ventura County Investigation*. Bulletin 46.

Leason F. P. & Associates. 1959. *Upper Ventura River Valley and Ojai Valley Sewerage Study*. Pasadena, Calif.: The Associates.

Richardson, H. E., and others. 1968. *Ventura River Project Extensions, Feasibility Study, Ground-Water Geology and Resources Appendix*. United States Bureau of Reclamation (USBR): unnumbered Report.

Turner, J. M. 1971. *Ventura County Water Resources management Study, Geohydrology of the Ventura River System*. Ventura County Department of Public Works, Flood Control District: unnumbered Report.

## Errata

Changes made to the basin description will be noted here.



**EXHIBIT 2a**

**EXHIBIT 2a**

# 4-002 OJAI VALLEY

## Basin Boundaries Description

2016

### Summary

The Ojai Valley groundwater basin is located in the central-western portion of Ventura County. The basin is bound on the north by consolidated rocks of the Topatopa Mountains. The easternmost portion of the basin is separated from the adjacent Upper Ojai Valley groundwater basin by the San Cayetano fault. The basin is bound on the south by the Santa Ana fault and the consolidated rocks of Black Mountain. A surface water divide and a subsurface bedrock ridge that forms a groundwater divide separates the basin from the adjoining Upper Ventura River subbasin to the west. South of the Santa Ana fault, thin terrace deposits underlain by bedrock and lacking direct subsurface hydraulic connection with the basin are excluded from the basin. These alluvial terrace deposits have little to no significant groundwater storage capacity. The boundary is defined by 13 segments detailed in the descriptions below.

### Segment Descriptions

This table describes each line segment composing the basin boundary polygon for this basin. It includes fields describing the segment label, segment type, segment description, and cited reference. For more information, email [sgmps@water.ca.gov](mailto:sgmps@water.ca.gov).

<u>Segment Label</u>	<u>Segment Type</u>	<u>Description</u>	<u>Ref</u>
1-2	- Alluvial	Begins from point (1) and crosses the Quaternary alluvium to point (2).	{a}
2-3	E Alluvial	Continues from point (2) and follows the contact of Quaternary alluvium with various Tertiary sedimentary rocks to point (3).	{b}
3-4	- Alluvial	Continues from point (3) and crosses Quaternary alluvium to point (4).	{a}
4-5	E Alluvial	Continues from point (4) and follows the contact of Quaternary alluvium with Tertiary Cozy Dell Shale to point (5).	{b}
5-6	- Alluvial	Continues from point (6) and follows the contact of Quaternary alluvium with various Tertiary sedimentary rocks to point (7).	{b}
6-7	E Alluvial	Continues from point (5) and crosses Quaternary alluvium to point (6).	{a}
7-8	- Fault	Continues from point (7) and follows the San Cayetano fault to point (8).	{c}
8-9	E Alluvial	Continues from point (8) and follows the contact of Quaternary alluvium with various Tertiary sedimentary rocks to point (9).	{b}
9-10	- Fault	Continues from point (9) and follows the Santa Ana fault to point (10).	{a}

10-11	E Alluvial	Continues from point (10) and follows the contact of Quaternary alluvium with Sespe Formation to point (11).	{d}
11-12	I Groundwater Divide	Continues from point (11) and follows a subsurface bedrock ridge and a surface divide to point (12).	{a}
12-1	E Alluvial	Continues from point (12) and follows the contact of Quaternary alluvium with various Tertiary sedimentary rocks and ends at point (1).	{d}
13-13	E Alluvial	Island within the basin boundary: begins from point (13) and follows the contact of the Quaternary alluvium with Coldwater Sandstone and Cozy Dell Shale and ends at point (13).	{b}

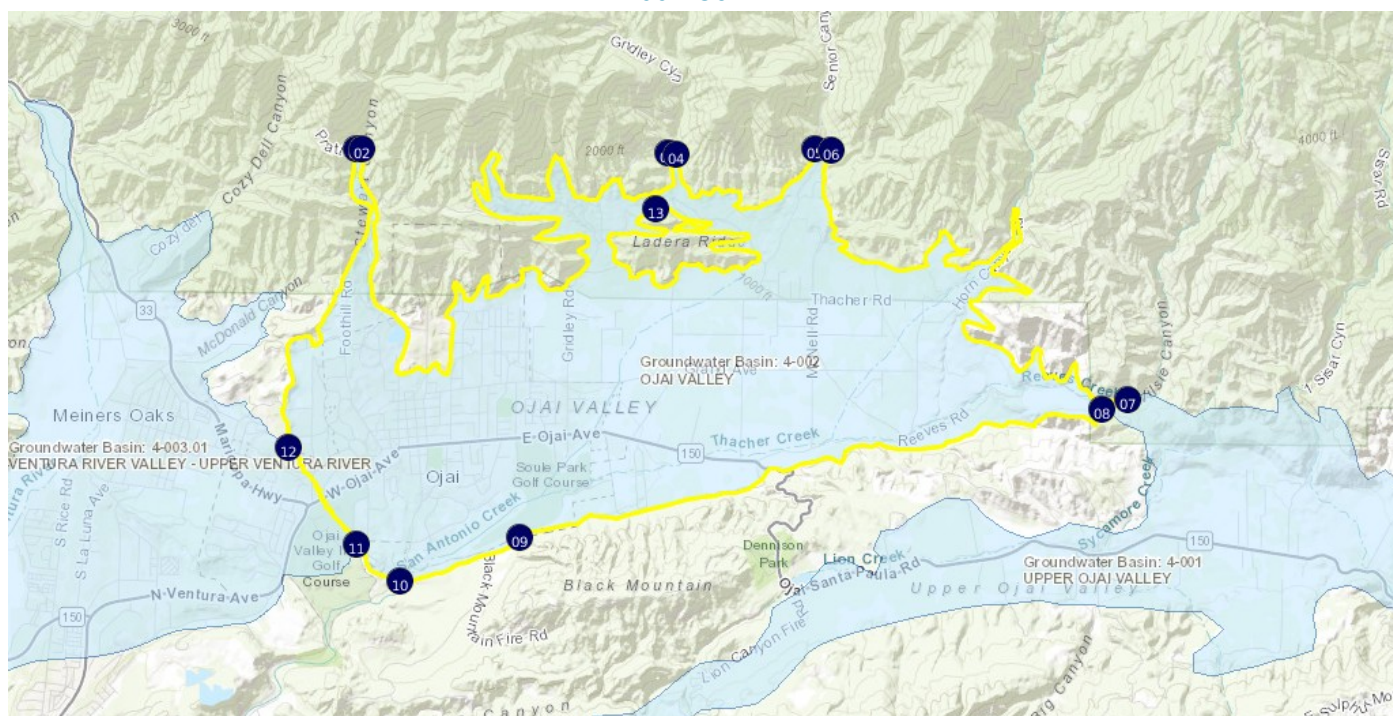
## Significant Coordinates

This table contains the latitudes and longitudes of all the beginning and ending points of each segment comprising the basin boundary polygon for this basin. For more information, email [sgmps@water.ca.gov](mailto:sgmps@water.ca.gov).

<u>Point</u>	<u>Latitude</u>	<u>Longitude</u>	
1	34.478450793	-119.254761878	
2	34.478452261	-119.253960199	
3	34.478005123	-119.215409106	
4	34.477954846	-119.214341855	
5	34.478460727	-119.196917412	
6	34.478300258	-119.19480887	
7	34.452385212	-119.157425748	
8	34.451419976	-119.160576289	
9	34.438199307	-119.234069884	
10	34.433549061	-119.249251927	
11	34.437432018	-119.254670854	
12	34.44740611	-119.263274675	
13	34.472303032	-119.216908514	

# Map

## 4-002 OJAI VALLEY



[Map Link](#)

## References

This table contains the reference listings for the citations noted in the segment description table. Each reference contains the name of the reference, in addition to the publication date. For more information, email [sgmps@water.ca.gov](mailto:sgmps@water.ca.gov).

<u>Ref</u>	<u>Citation</u>	<u>Pub Date</u>	<u>Global ID</u>
{a}	BBMRS	varies	45
{b}	California Department of Conservation, California Geologic Society (CGS), Geologic Map of the Ojai 7.5' Quadrangle, Ventura County, California: A Digital Database, Version 1.0, 1:24,000, S.S. Tan, P.J. Irvine, C.I. Gutierrez. <a href="ftp://ftp.consrv.ca.gov/pub/dmg/rgmp/Prelim_geo_pdf/Ojai_prelim.pdf">ftp://ftp.consrv.ca.gov/pub/dmg/rgmp/Prelim_geo_pdf/Ojai_prelim.pdf</a>	2005	78
{c}	California Geological Survey (CGS), Geologic Atlas of California Map No. 008, Los Angeles Sheet, , 1:250,000, Charles W. Jennings and Rudolph G. Strand. URL: <a href="http://www.quake.ca.gov/gmaps/GAM/losangeles/losangeles.html">http://www.quake.ca.gov/gmaps/GAM/losangeles/losangeles.html</a>	1969	33
{d}	California Geological Survey (CGS), Geologic Map of the Matilija Quadrangle, 1:24,000, S.S. Tan and T.A. Jones. URL: <a href="http://www.conservation.ca.gov/cgs/rgm/rgm/Pages/preliminary_geologic_maps.aspx">http://www.conservation.ca.gov/cgs/rgm/rgm/Pages/preliminary_geologic_maps.aspx</a>	2006	51

### Footnotes

- I: Internal
- E: External

**EXHIBIT 2b**

**EXHIBIT 2b**

## Ojai Valley Groundwater Basin

- Groundwater Basin Number: 4-2
- County: Ventura
- Surface Area: 6,830 acres (10.7 square miles)

### Basin Boundaries and Hydrology

The Ojai Valley Groundwater Basin is bounded on the west and east by nonwater-bearing Tertiary age rocks, on the south by the Santa Ana fault and the Sulphur Mountain Range, and on the north by Black Mountain and the Topatopa Mountains. The basin is drained by Thacker and San Antonio Creeks to the Ventura River. Average annual precipitation ranges from 20 to 24 inches.

### Hydrogeologic Information

#### ***Water Bearing Formations***

Groundwater is found in alluvium and to some extent in fractures and interstices of the underlying older Tertiary sedimentary rocks (CSWRB 1953). Groundwater in the basin is mostly unconfined, but locally confined conditions are found. The estimated average specific yield of the basin is 5.5 percent (CSWRB 1953).

**Alluvial Deposits.** Groundwater is found in alluvium of Holocene and Pleistocene age, which consists of sand, gravel, and clay. The alluvium is composed of about 50 to 100 feet of sediments similar to those occurring in the underlying Pleistocene alluvium though usually less weathered (CSWRB 1953). These alluvial deposits are the most productive units in the basin, with well yields that range from 100 to 600 gpm (CSWRB 1953).

**Tertiary Sediments.** The weathered sediments of Tertiary age are usually consolidated or cemented and typically yield minor amounts of poor quality water (CSWRB 1953; VCPWA 2002). Well yields are typically 2 to 5 gpm, reaching a maximum of about 50 gpm (CSWRB 1953).

#### ***Recharge Areas***

Recharge to the basin is from infiltration of precipitation on the valley floor, and percolation of surface waters through alluvial channels, and water diverted into the Ojai spreading grounds (CSWRB 1953). Some additional recharge is provided by excess irrigation flow and a minor amount of subsurface flow (CSWRB 1953). This basin is quickly recharged during wet periods, and conversely is rapidly depleted during periods of drought (CSWRB 1953).

#### ***Groundwater Level Trends***

In the western part of the basin, groundwater levels generally rose about 10 feet from 1973 to 2000, with hydrographs showing seasonal variations of 10 to 15 feet. In the central part of the basin, seasonal variation increases and some wells experienced flowing conditions. In the eastern part of the basin, seasonal variation is pronounced, with one hydrograph showing a seasonal rise of 90 feet and a typical seasonal variation at that well of about 40 feet.

Hydrographs do not indicate a long-term decline for this basin during 1973 through 2000.

### **Groundwater Storage**

**Groundwater Storage Capacity.** The total storage capacity has been estimated to be 70,000 af (CSWRB 1953), 84,000 af (VCPWA 2002), and 85,000 af (DWR 1975).

**Groundwater in Storage.** The groundwater in storage was estimated to be 75 to 80 percent full in 1999 (Panaro 2000), or about 63,000 to 67,200 af.

### **Groundwater Budget (Type A)**

Estimated groundwater storage depletion during the seven-year drought period from 1944 to 1951 amounted to about 28,000 af (CSWRB 1953). Total consumptive use of water on overlying lands, including precipitation, was estimated to have been about 71,000 af (CSWRB 1953). Consumptive use of applied water from 1944 to 1951 was estimated to have been about 28,200 af (SWRB 1953). Underflow into the basin is estimated to range from 800 to 2,500 af/yr (Panaro 2000). Recharge from percolation of excess irrigation is estimated to be 2,350 af/yr (Panaro 2000).

### **Groundwater Quality**

**Characterization.** Groundwater in the basin is mainly calcium bicarbonate-sulfate in character (DWR 1959). Analyses of water from 19 wells sampled in 1952 show average TDS content of 640 mg/L with a range from 450 to 1,140 mg/L (DWR 1959). The average TDS content for analyses in 2000 was 665 mg/L, ranging from 568 to 790 mg/L (SCWC 2001). Analyses of water from 6 public supply wells show TDS content ranging from 568 to 790 mg/L with an average of about 703 mg/L.

**Impairments.** Comparison of samples collected from 9 wells in 1933 with samples collected in 1952 show that the average TDS content level increased about 150 mg/L (DWR 1959). The increase in average TDS content from 1952 (DWR 1959) and 2000 (SCWC 2001) suggests that this trend may be continuing, though at a lower rate. High nitrate and sulfate concentrations have been reported in the basin (Panaro 2000). Twenty-one wells sampled in the basin in 1994 to 1995 indicate medium to high nitrate concentrations for many parts of the basin (VCPWA 1996).

### **Water Quality in Public Supply Wells**

Constituent Group <sup>1</sup>	Number of wells sampled <sup>2</sup>	Number of wells with a concentration above an MCL <sup>3</sup>
Inorganics – Primary	8	0
Radiological	8	1
Nitrates	8	1
Pesticides	8	0
VOCs and SVOCs	6	0
Inorganics – Secondary	8	8



<sup>1</sup> A description of each member in the constituent groups and a generalized discussion of the relevance of these groups are included in *California's Groundwater – Bulletin 118* by DWR (2003).

<sup>2</sup> Represents distinct number of wells sampled as required under DHS Title 22 program from 1994 through 2000.

<sup>3</sup> Each well reported with a concentration above an MCL was confirmed with a second detection above an MCL. This information is intended as an indicator of the types of activities that cause contamination in a given basin. It represents the water quality at the sample location. It does not indicate the water quality delivered to the consumer. More detailed drinking water quality information can be obtained from the local water purveyor and its annual Consumer Confidence Report.

## Well Production characteristics

Well yields (gal/min)		
Municipal/Irrigation	Range: 100 – 600 gal/min (CSWRB 1953)	Average: 383 gal/min (VCWA 2002)
Total depths (ft)		
Domestic	Range:	Average:
Municipal/Irrigation	Range:	Average:

## Active Monitoring Data

Agency	Parameter	Number of wells /measurement frequency
Ventura County Department of Water Resources	Groundwater levels	24
Department of Health Services and cooperators	Title 22 water quality	22

## Basin Management

Groundwater management:

Water agencies

Public	Ventura County Public Works Agency, Ojai Basin Groundwater Management Agency, Casitas Municipal Water District
Private	Southern California Water Company

## References Cited

- California Department of Water Resources (DWR). 1959. *Water Quality and Water Quality Problems, Ventura County*. Bulletin 75. Two Volumes. 195 p.
- \_\_\_\_\_. 1975. *California's Ground Water*. Bulletin 118. 135 p.
- California State Water Resources Board (CSWRB). 1953. *Ventura County Investigation*. Bulletin 12. Two Volumes.
- Panaro, D. 2000. Fox Canyon Groundwater Management Agency: Written Communication to R.R. Davis (DWR), March 21, 2000.
- Southern California Water Company (SCWC). 2001. *Water Quality Report*. <http://www.aswater.com/2kWQRpts/Ojai.PDF> (March 2002).

Ventura County Public Works Agency (VCPWA). 1996. *Ventura County Groundwater Quality Assessment Report*. 57 p.

\_\_\_\_\_. 2002. "Ventura County Groundwater Basins."  
<http://www.ventura.org/vcpwa/wre/wrd/pages/BASINS.htm> (March 2002).

## Additional References

Alam el Din, Ibrahim O. 1964. *Water in the Ojai Valley, Ventura County, Southern California*. University of California, Los Angeles. Unpublished M.A. Thesis. 104 p.

Bush, G. L. 1956. *Geology of Upper Ojai Valley*. 60 p.

Clark, M. N. 1982. *Tectonic Geomorphology and Neotectonics of the Ojai Valley and Upper Ventura River*. University of California, Santa Barbara. Unpublished M.A. Thesis. 77 p.

Dibblee, T. W. Jr. and H. E Ehrenspeck. 1987. *Geologic map of the Ojai quadrangle, Ventura County, California*. Thomas Wilson Dibblee Jr. Geological Foundation. Scale 1:24,000.

Lippincott, J. B. 1925. *Report on Source of Water Supply and Proposed Irrigation System for the Ojai Valley*. Unpublished Manuscript.

## Errata

Changes made to the basin description will be noted here.

**EXHIBIT 3a**

**EXHIBIT 3a**

# 4-003.01 VENTURA RIVER VALLEY – UPPER VENTURA RIVER

## Basin Boundaries Description

2016

### Summary

The Upper Ventura River groundwater subbasin is located in central-western Ventura County. The subbasin is bound on the north by impermeable rocks of the Santa Ynez Mountains. A subsurface bedrock ridge and groundwater divide separates the subbasin from the adjacent Ojai Valley groundwater basin to the east. The subbasin is bound on the southeast and the west by consolidated Tertiary sediments. The subbasin extends south in the Ventura River Valley to where it meets the Lower Ventura River subbasin at a narrow portion of the valley and at the approximate location of the Red Mountain fault. The subbasin boundary is defined by eleven (11) segments detailed in the descriptions below.

### Segment Descriptions

This table describes each line segment composing the basin boundary polygon for this basin. It includes fields describing the segment label, segment type, segment description, and cited reference. For more information, email [sgmps@water.ca.gov](mailto:sgmps@water.ca.gov).

<u>Segment Label</u>	<u>Segment Type</u>	<u>Description</u>	<u>Ref</u>
1-2	E Alluvial	Begins at point (1) and generally follows the contact of Quaternary alluvium with various Tertiary sedimentary rocks to point (2).	{a}
2-3	I Groundwater Divide	Continues from point (2) and follows a subsurface bedrock ridge, a groundwater divide, and a surface divide to point (3).	{b}
3-4	E Alluvial	Continues from point (3) and follows the contact of Quaternary alluvium with Sespe Formation to point (4).	{a}
4-5	- Fault	Continues from point (4) and follows an unnamed fault to point (5).	{c}
5-6	E Alluvial	Continues from point (5) and follows the contact of active alluvium and colluvium with lower permeability older alluvium to point (6).	{b}
6-7	- Fault	Continues from point (6) and follows the Santa Ana Fault to point (7).	{a}
7-8	E Alluvial	Continues from point (7) and follows the contact of active alluvium with older alluvium and various Tertiary sedimentary rocks to point (8).	{d}
8-9	I Alluvial	Continues from point (8) and crosses the alluvium of the Ventura River valley at the Casitas Vista bridge to point (9).	{b}

9-10	E Alluvial	Continues from point (9) and generally follows the contact of Quaternary alluvium with various Tertiary sedimentary rocks to point (10).	{d}
10-11	E Alluvial	Continues from point (10) and crosses the older alluvium, excluding an area of thin alluvium and Sespe Formation in the west and including areas of thick alluvium in the east, to point (11).	{b}
11-1	E Alluvial	Continues from point (11) and generally follows the contact of Quaternary alluvium with various Tertiary sedimentary rocks and ends at point (1).	{d}

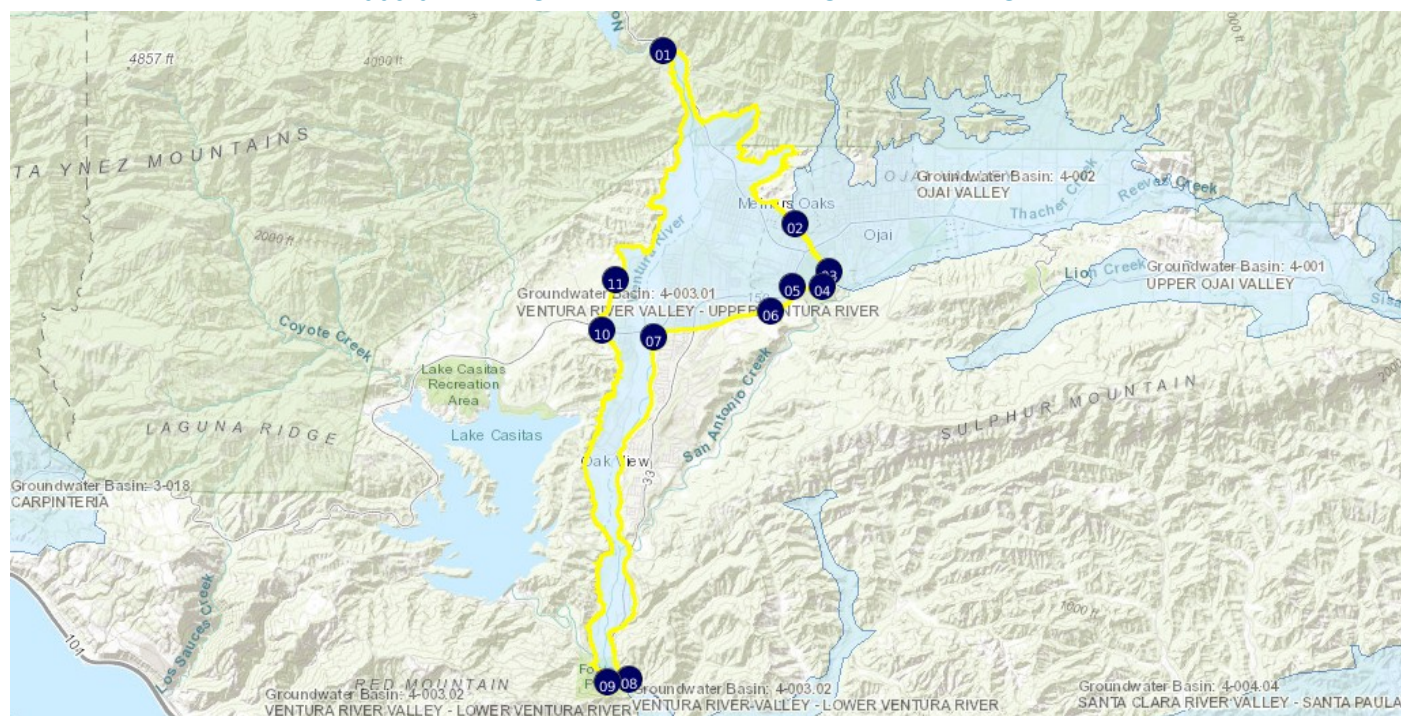
# Significant Coordinates

This table contains the latitudes and longitudes of all the beginning and ending points of each segment comprising the basin boundary polygon for this basin. For more information, email [sgmps@water.ca.gov](mailto:sgmps@water.ca.gov).

<u>Point</u>	<u>Latitude</u>	<u>Longitude</u>	
1	34.483285737	-119.296538818	
2	34.44740611	-119.263274675	
3	34.437432018	-119.254670854	
4	34.434436555	-119.256415077	
5	34.434229067	-119.263895252	
6	34.429193615	-119.26953361	
7	34.423808356	-119.299086585	
8	34.352634947	-119.30500381	
9	34.352287913	-119.310520285	
10	34.425195196	-119.311964195	
11	34.435726436	-119.308534536	

# Map

## 4-003.01 VENTURA RIVER VALLEY - UPPER VENTURA RIVER



[Map Link](#)

## References

This table contains the reference listings for the citations noted in the segment description table. Each reference contains the name of the reference, in addition to the publication date. For more information, email [sgmps@water.ca.gov](mailto:sgmps@water.ca.gov).

<u>Ref</u>	<u>Citation</u>	<u>Pub Date</u>	<u>Global ID</u>
{a}	California Geological Survey (CGS), Geologic Map of the Matilija Quadrangle, 1:24,000, S.S. Tan and T.A. Jones.URL: <a href="http://www.conservation.ca.gov/cgs/rghm/rgm/Pages/preliminary_geologic_maps.aspx">http://www.conservation.ca.gov/cgs/rghm/rgm/Pages/preliminary_geologic_maps.aspx</a>	2006	51
{b}	BBMRS	varies	45
{c}	Minor, S.A., and Brandt, T.R., 2015, Geologic map of the southern White Ledge Peak and Matilija quadrangles, Santa Barbara and Ventura Counties, California: U.S. Geological Survey Scientific Investigations Map 3321, 34 p., 1 sheet, 1:24,000, <a href="https://dx.doi.org/10.3133/sim3321">https://dx.doi.org/10.3133/sim3321</a> .	5/26/2015	96
{d}	California Geological Survey (CGS), Geologic Compilation of Quaternary Surficial Deposits in Southern California, T.L. Bedrossian, P. Roffers, C.A. Hayhurst, J.T. Lancaster, and W.R. Short.URL: <a href="http://www.conservation.ca.gov/cgs/fwgp/Pages/sr217.aspx">http://www.conservation.ca.gov/cgs/fwgp/Pages/sr217.aspx</a>	2012	50

### Footnotes

- I: Internal
- E: External

**EXHIBIT 3b**

**EXHIBIT 3b**



## **Ventura River Valley Groundwater Basin, Upper Ventura River Subbasin**

- Groundwater Basin Number: 4-3.01
- County: Ventura
- Surface Area: 7,410 acres (11.6 square miles)

### **Basin Boundaries and Hydrology**

The Upper Ventura River Subbasin is bounded on the south by the Lower Ventura River Subbasin, on the east by the Ojai Valley Groundwater Basin, and elsewhere by impermeable rocks of the Santa Ynez Mountains (DPW 1933). The surface is drained by the Coyote, Matilija, and San Antonio Creeks and the Ventura River. Average annual precipitation ranges from 14 to 24 inches.

### **Hydrogeologic Information**

#### ***Water Bearing Formations***

In the basin, groundwater is chiefly found in Holocene and Pleistocene age alluvium (DPW 1933; Panaro 2002) and is unconfined. Thickness of the alluvium ranges from 60 to 100 feet; however, it apparently is only 5 to 30 feet in the San Antonio and Coyote Creek areas, (DWR 1959). The average specific yield of the basin is estimated at 8 percent (CSWRB 1953).

#### ***Restrictive Structures***

The east-trending Santa Ana fault crosses the basin, but it is not known whether or not the fault is a barrier to groundwater movement. In 1906, the City of Ventura constructed a partial subsurface barrier in the alluvium of the Ventura River near Foster Park to create rising water, which was to be diverted for domestic and irrigation uses (CSWRB 1953).

#### ***Recharge Areas***

Recharge to the basin is primarily by percolation of flow in the Ventura River and, to a lesser extent, by percolation of rainfall to the valley floor and excess irrigation water. A slight amount of recharge is derived from subsurface inflow through fractures in the underlying impermeable rocks (CSWRB 1953).

#### ***Groundwater Level Trends***

Groundwater moves southward through the alluvium following the surface drainage, ultimately entering Lower Ventura River Subbasin below Foster Park. Hydrographs indicate that groundwater levels have been mostly stable in this subbasin. Water levels fluctuate seasonally by 5 to 20 feet, but usually recover each year to about the previous high level. These hydrographs also show gradual decline and rise of water levels associated with dry and wet weather cycles; however, these long term cycles typically are of lower amplitude than the seasonal cycles.

### **Groundwater Storage**

**Groundwater Storage Capacity.** The total storage capacity for this subbasin has been estimated to be 10,000 af (CSWRB 1953), 35,000 af (DWR 1975), and 35,118 af (Panaro 2000).

**Groundwater in Storage.** The subbasin is estimated to have been 90 percent full (Panaro 2000;VCWA 2002), or have about 31,600 af of groundwater in storage in 1999.

### **Groundwater Budget (Type C)**

Recharge by underflow is estimated to be at least 3,500 af/yr.

### **Groundwater Quality**

**Characterization.** Groundwater in the subbasin is calcium bicarbonate-sulfate in character. Analyses of water from 23 wells sampled in the 1950s show TDS content that ranges of 732 to 1,420 mg/L (DWR 1959). The average TDS content in the basin has been reported at 680 mg/L (VCWA 1996). Water from 18 public supply wells show TDS content ranging from 500 to 1,240 mg/L with an average of approximately 706 mg/L.

**Impairments.** TDS content is high in some parts of the subbasin.

### **Water Quality in Public Supply Wells**

Constituent Group <sup>1</sup>	Number of wells sampled <sup>2</sup>	Number of wells with a concentration above an MCL <sup>3</sup>
Inorganics – Primary	17	4
Radiological	17	0
Nitrates	18	2
Pesticides	16	0
VOCs and SVOCs	16	0
Inorganics – Secondary	17	4

<sup>1</sup> A description of each member in the constituent groups and a generalized discussion of the relevance of these groups are included in *California's Groundwater – Bulletin 118* by DWR (2003).

<sup>2</sup> Represents distinct number of wells sampled as required under DHS Title 22 program from 1994 through 2000.

<sup>3</sup> Each well reported with a concentration above an MCL was confirmed with a second detection above an MCL. This information is intended as an indicator of the types of activities that cause contamination in a given basin. It represents the water quality at the sample location. It does not indicate the water quality delivered to the consumer. More detailed drinking water quality information can be obtained from the local water purveyor and its annual Consumer Confidence Report.

## Well Characteristics

Well yields (gal/min)		
Municipal/Irrigation	Range: - 10 to 200 gal/min (CSWRB 1953)	Average: 600 gal/min (Panaro 2000)
Total depths (ft)		
Domestic	Range:	Average:
Municipal/Irrigation	Range:	Average:

## Active Monitoring Data

Agency	Parameter	Number of wells /measurement frequency
Ventura County	Groundwater levels	17
Department of Health Services and cooperators	Title 22 water quality	18

## Basin Management

Groundwater management:

Water agencies

Public                      Ventura County Public Works Agency

Private                     Southern California Water Company

## References Cited

- California Department of Water Resources (DWR). 1959. *Water Quality and Water Quality Problems, Ventura County*. Bulletin 75. Two Volumes. 195 p.
- California State Water Resources Board (CSWRB). 1953. *Ventura County Investigation*. Bulletin 12. Two Volumes.
- Panaro, D. 2000. Fox Canyon Groundwater Management Agency: Written Communication to R.R. Davis (DWR), March 21, 2000.
- Ventura County Public Works Agency (VCPWA). 1996. *Ventura County Groundwater Quality Assessment Report*. 57 p.
- \_\_\_\_\_. 2002. "Ventura County Groundwater Basins."  
<http://www.ventura.org/vcpwa/wre/wrd/pages/BASINS.htm> (March 2002).

## Additional References

- California Department of Public Works, Division of Water Resources (CDPW). 1933. *Ventura County Investigation*. Bulletin 46.
- \_\_\_\_\_. 1965. *Ventura County and Upper Santa Clara River Drainage Area Land and Water Use Survey, 1961*. Bulletin 122. 59 p.
- \_\_\_\_\_. 1975. *California's ground water*. Bulletin 118. 135 p.
- \_\_\_\_\_, Southern District. 1981. *Ventura County and Upper Santa Clara River Drainage Area Land Use Study, 1980: District Report*. 25 p.
- Leason F. P. & Associates. 1959. *Upper Ventura River Valley and Ojai Valley Sewerage Study*. Pasadena, Calif.: The Associates.

Richardson, H. E., and others. 1968. *Ventura River Project Extensions, Feasibility Study, Ground-Water Geology and Resources Appendix*. United States Bureau of Reclamation (USBR): unnumbered Report.

Turner, J. M. 1971. *Ventura County Water Resources management Study, Geohydrology of the Ventura River System*. Ventura County Department of Public Works, Flood Control District: Unnumbered Report.

## Errata

Changes made to the basin description will be noted here.

**EXHIBIT 4a**

**EXHIBIT 4a**

# 4-003.02 VENTURA RIVER VALLEY – LOWER VENTURA RIVER

## Basin Boundaries Description

2003

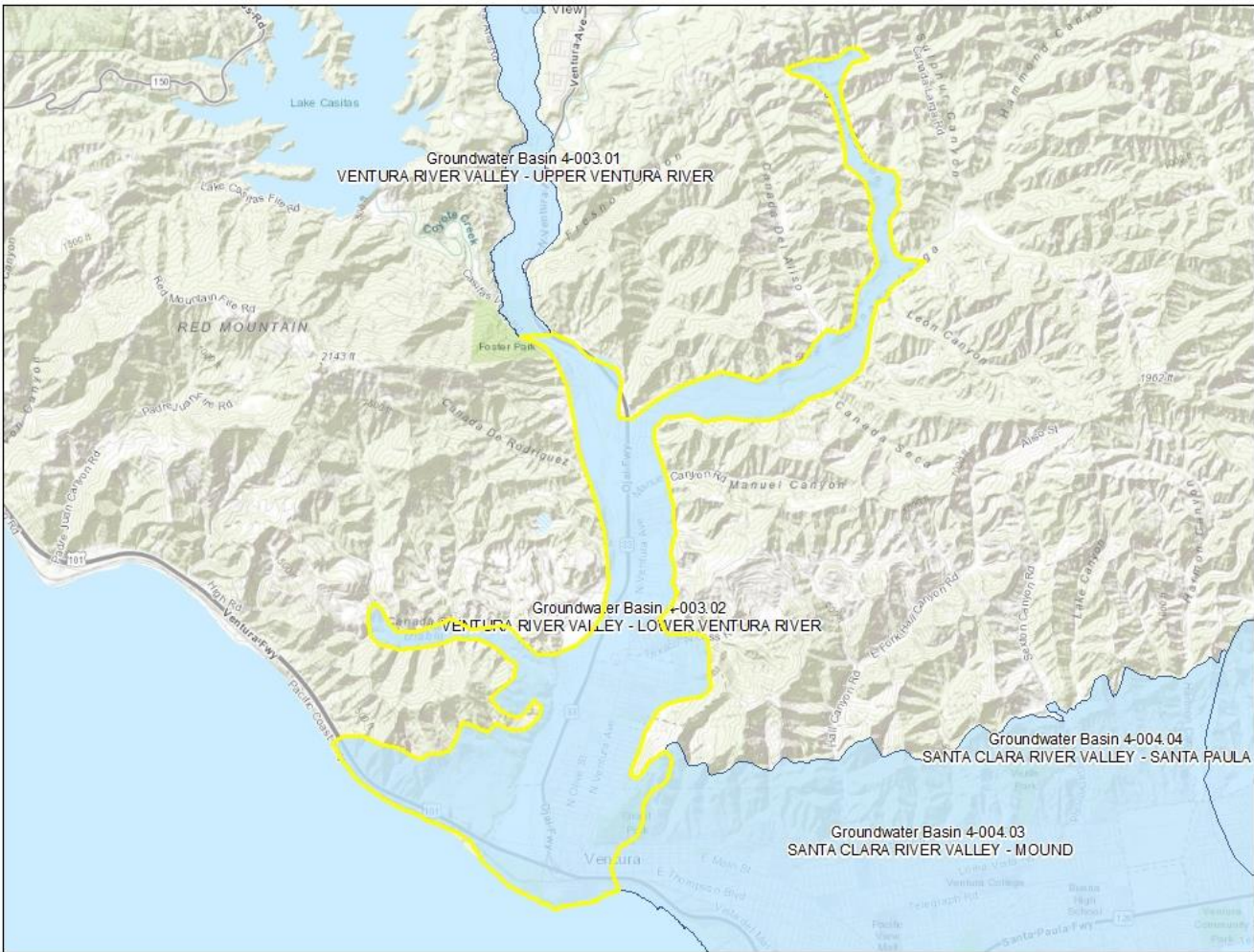
- County: Ventura
- Surface Area: 5,300 acres (8.3 square miles)

### Summary

The Lower Ventura River Subbasin is bounded on the north by the Upper Ventura River Subbasin, on the south by the Pacific Ocean and Mound Subbasin of the Santa Clara River Valley Groundwater Basin, and elsewhere by near impervious rocks of the Santa Ynez Mountains (DPW 1933; Panaro 2000). The valley is drained by Canada Larga and the Ventura River.

# Map

## 4-003.02 – VENTURA RIVER VALLEY – LOWER VENTURA RIVER



[Map Link](#)

# References

This table contains the reference listings for the citations noted in the Summary. Each reference contains the name of the reference and the publication date. For more information, email [sgmps@water.ca.gov](mailto:sgmps@water.ca.gov).

Citation	Pub Date
California Department of Public Works, Division of Water Resources (DPW). 1933. <i>Ventura County Investigation</i> . Bulletin 46.	1933
Panaro, D. 2000. Fox Canyon Groundwater Management Agency: Written Communication to R.R. Davis (DWR), March 21, 2000.	2000

**EXHIBIT 4b**

**EXHIBIT 4b**



## Ventura River Valley Groundwater Basin, Lower Ventura River Subbasin

- Groundwater Basin Number: 4-3.02
- County: Ventura
- Surface Area: 5,300 acres (8.3 square miles)

### Basin Boundaries and Hydrology

The Lower Ventura River Subbasin is bounded on the north by the Upper Ventura River Subbasin, on the south by the Pacific Ocean and Mound Subbasin of the Santa Clara River Valley Groundwater Basin, and elsewhere by near impervious rocks of the Santa Ynez Mountains (DPW 1933; Panaro 2000). The valley is drained by Canada Larga and the Ventura River. Average annual precipitation ranges from 14 to 16 inches.

### Hydrogeologic Information

#### ***Water Bearing Formations***

Groundwater is found in alluvium of Holocene and Pleistocene age and the San Pedro Formation of Pleistocene age. Groundwater in the basin is unconfined (Panaro 2000). The estimated average specific yield of the basin is 8 percent (CSWRB 1953).

**Alluvial Deposits.** The alluvium of Holocene and Pleistocene age consists of sand, gravel, and clay. The deposits range from 60 to 100 feet thick beneath the floor of the Ventura River Valley (CSWRB 1953).

**San Pedro Formation.** The San Pedro Formation consists of gravel, sand, silt, and clay, which near the river mouth is at least partially hydraulically isolated from the Holocene alluvium by relatively impervious material (CSWRB 1953).

#### ***Recharge Areas***

The basin is recharged by percolation of Ventura River water, precipitation to the valley floor, and irrigation return flow and by subsurface inflow from the Upper Ventura River Subbasin (Panaro 2000).

#### ***Groundwater Level Trends***

Groundwater moves southward following the course of the Ventura River to the Pacific Ocean. During 1948 through 1956, groundwater levels in one well fluctuated about 25 feet and experienced flowing conditions in 1950 and 1954 (Panaro 2002).

#### ***Groundwater Storage***

**Groundwater Storage Capacity.** The total storage capacity is estimated at 264,000 af (Panaro 2000; VCPWA 2002).

**Groundwater in Storage.** Unknown.

### **Groundwater Budget (Type A)**

Estimates of recharge include underflow of 1,100 af/yr and irrigation return of less than 100 af/yr (Panaro 2000). Extractions are estimated to be less than 400 af/yr (Panaro 2000).

### **Groundwater Quality**

**Characterization.** Groundwater in the basin is sodium bicarbonate in character. Water from 2 public supply wells has an average TDS content of 772 mg/L in the basin with a range from 760 to 784 mg/L. However, TDS content can range from 1,100 to 3,000 mg/L during extended dry spells (VCPWA 1996).

**Impairments.** Hydrogen sulfide gas has been reported in the water, particularly during periods when water levels are lowest (DWR 1959). Oil has also been found in the water (DWR 1959). High sulfate and nitrate minerals are common along the shallow alluvium drainage courses where most remaining water wells are found (VCPWA 1996).

### **Well Characteristics**

Well yields (gal/min)		
Municipal/Irrigation	Range:	Average: 20 gal/min (Panaro 2000)
Total depths (ft)		
Domestic	Range:	Average:
Municipal/Irrigation	Range:	Average:

### **Active Monitoring Data**

Agency	Parameter	Number of wells /measurement frequency
Department of Health Services and cooperators	Title 22 water quality	2

### **Basin Management**

Groundwater management:

Water agencies

Public	Ventura County Public Works Agency
Private	Southern California Water Company

### **References Cited**

- California Department of Public Works, Division of Water Resources (DPW). 1933. *Ventura County Investigation*. Bulletin 46.
- California Department of Water Resources (DWR). 1959. *Water Quality and Water Quality Problems, Ventura County*. Bulletin 75. Two Volumes. 195 p.
- California State Water Resources Board (CSWRB). 1953. *Ventura County Investigation*. Bulletin 12. Two Volumes.

Panaro, D. 2000. Fox Canyon Groundwater Management Agency: Written Communication to R.R. Davis (DWR), March 21, 2000.

\_\_\_\_\_. 2002. Fox Canyon Groundwater Management Agency: Written Communication to T. M. Ross (DWR), July 2, 2002.

Southern California Water Company (SCWC). 2001. *Water Quality Report*.  
<http://www.aswater.com/2kWQRpts/Ojai.PDF> (March 2002).

Ventura County Public Works Agency (VCPWA). 1996. *Ventura County Groundwater Quality Assessment Report*. 57 p.

\_\_\_\_\_. 2002. "Ventura County Groundwater Basins."  
<http://www.ventura.org/vcpwa/wre/wrd/pages/BASINS.htm> (March 2002).

## Additional References

California Department of Water Resources (DWR). 1975. *California's Ground Water*. Bulletin 118. 135 p.

Leason F. P. & Associates. 1959. *Upper Ventura River Valley and Ojai Valley Sewerage Study*. Pasadena, Calif.: The Associates.

Turner, J. M. 1971. *Ventura County Water Resources management Study, Geohydrology of the Ventura River System*. Ventura County Department of Public Works, Flood Control District: unnumbered Report.

Richardson, H. E., and others. 1968. *Ventura River Project Extensions, Feasibility Study, Ground-Water Geology and Resources Appendix*. United States Bureau of Reclamation (USBR): unnumbered Report.

## Errata

Changes made to the basin description will be noted here.

PROOF OF SERVICE

I am a resident of the State of California and over the age of eighteen years, and not a party to the action herein; my business address is Best Best & Krieger LLP, 2001 N. Main Street, Suite 390, Walnut Creek, CA 94596. On November 23, 2021, I served the following document(s):

**NOTICE OF HEARING ON ORDER TO SHOW CAUSE RE WATERSHED AND BASIN BOUNDARIES; DECLARATION OF SARAH CHRISTOPHER FOLEY IN SUPPORT THEREOF**

- ☐ by placing the document(s) listed above in a sealed envelope with postage thereon fully prepaid, in the United States mail at Walnut Creek, California addressed as set forth below. I am readily familiar with the firm's practice of collection and processing correspondence for mailing. Under that practice it would be deposited with the U.S. Postal Service on that same day with postage thereon fully prepaid in the ordinary course of business.
- ☐ I caused such envelope to be delivered via overnight delivery. Such envelope was deposited for delivery by United Parcel Service following the firm's ordinary business practices.
- ☒ by transmission via **E-Service to File & ServeXpress** to the person(s) set forth below. Local Rules of Court 2.10 (P).
- ☒ **By e-mail or electronic transmission.** I caused the documents to be sent to the persons at the e-mail addresses listed below. I did not receive, within a reasonable time after the transmission, any electronic message or other indication that the transmission was unsuccessful.

Daniel Cooper  
Sycamore Law  
1004 O'Reilly Ave.  
San Francisco CA 94129  
Tel: (415) 360-2962  
daniel@sycamore.law

Matthew Bullock  
Deputy Attorney General  
California Department of Justice  
Natural Resources Law Section  
455 Golden Gate Ave., Suite 11000  
San Francisco, CA 94102-7004  
Tel: (415) 510-3376  
matthew.bullock@doj.ca.gov

Attorneys for Petitioner and Plaintiff  
Santa Barbara Channelkeeper

Attorneys for Respondent and Defendant State  
Water Resources Control Board

Marc N. Melnick  
Deputy Attorney General  
Attorney General's Office  
1515 Clay Street, 20th Floor  
P.O. Box 70550  
Oakland, CA 94612-0550  
Tel: 510-879-0750  
Marc.melnick@doj.ca.gov

Attorneys for Respondent and Defendant State  
Water Resources Control Board

Edward J. Casey  
Gina Angiolollo  
Alston & Bird LLP  
333 South Hope Street, 16th Floor  
Los Angeles, CA 90071  
Tel: 213.576.1000  
ed.casey@alston.com  
gina.angiolollo@alston.com

Attorneys for Cross-Defendants AGR  
Breeding, Inc.; Bentley Family Limited  
Partnership; and Southern California Edison  
Company

Eric M. Katz  
Supervising Deputy Attorney General  
Noah Golden – Krasner  
Deputy Attorney General  
Carol Boyd  
Deputy Attorney General  
300 South Spring Street, Suite 1702  
Los Angeles, CA 90013  
Tel. (213) 269-6343  
Fax (213) 897-2802  
Eric.Katz@doj.ca.gov  
Noah.goldenrasner@doj.ca.gov  
Carol.boyd@doj.ca.gov

Attorneys for Proposed Intervenor California  
Department of Fish & Wildlife

Ryan Blatz  
Blatz Law Firm  
206 N. Signal St. Suite G  
Ojai, CA 93023  
Tel: (805) 646-3110  
ryan@ryanblatzlaw.com

Attorneys for Cross-Defendants Troy Becker  
and Jeri Becker; Janet Boulton; Michael  
Boulton; Michael Caldwell; Joseph Peter  
Clark, successor in interest to the Joseph  
Clark and Linda Epstein Family Trust; Linda  
Louise Epstein, successor in interest to the  
Joseph Clark and Linda Epstein Family Trust;  
Michael I. Cromer and Jody D. Cromer;  
Michel A. Etchart, Trustee of the Michel A.  
Etchart Separate Property Trust, and Mark W.  
Etchart, Trustee of the Mark W. Etchart  
Sepertate Property Trust; Lawrence  
Hartmann; Ole Konig; Krotana Institute of  
Theosophy; Stephen Michtell and Kathleen  
Reid Mitchell, Trustees of the Stephen  
Mitchell and Byron Katie Trust; North Fork  
Springs Mutual Water Company; Stephen  
Robert Smith, Trustee of the Charles R. Rudd  
and Lola L. Rudd Trust, dated May 20, 2976;  
Shlomo Raz; Sylvia Raz; Senior Canyon  
Mutual Water Company; Siete Robles Mutual  
Water Company; Soule Park Golf Course,  
Ltd.; Telos, LLC; Victor C. Timar, Jr. Trustee  
of the Timar Family Trust; John Town; Trudie  
Town; Asquith Family Limited Partnership,  
Ltd.; Burgess Ranch; Cary Cheldin; Cynthia  
Daniels; Wayne Francis; David Friend; The  
Larry & Pat Hartmann Family Trust; The John  
N. Hartmann Trust; Gary Hirschcron; Cheryl  
Jensen; Lutheran Church of the Holy Cross of  
Ojai, California; Janice Sattler (Mineo); Eitan

1  
2  
3  
4  
5  
6  
7  
8  
9  
10  
11  
12  
13  
14  
15  
16  
17  
18  
19  
20  
21  
22  
23  
24  
25  
26  
27  
28

Sloustcher; Rogers-Cooper Memorial Foundation; Robert Norris (not yet appeared); Patricia Norris; Old Creek Road Mutual Water Company (not yet appeared); Margaret Vanderfin; Telos Ojai, LLC (not yet appeared); Jennifer Ware; The Walker Jr. Living Trust; David Altman, Trustee of the 1190 El Toro Trust ; Babtiste Foundation; Sean A. Bennett and Leslie Bennett, Trustees of the Bennett Family Trust; Dwayne A. Bower and Marilyn E. Bower Trustees of the Bower Family Trust; Mark Terry Cline and Bonnie Burreson Cline, Trustees of the Mark Terry Cline and Connie Burreson Cline Revocable Trust; Robert R. Daddi and Darlene J. Daddi; Lucille A. Elrod, Trustee of the John and Lucille Elrod Family Trust; Friend's Stable & Orchard Inc. Daniel Hultgen, Trustee of the Hultgen Living Trust; Ojai Golf, LLC; Three Oaks, LLC, Erica J. Abrams, Trustee of the Erica J. Abrams Trust; Raul E. Alvarado and Hildegard M. Alvarado, Trustees of the Alvarado Family Trust; William Armstrong and April Nardini; Joseph Lynn Barthelemy and Elvira Lilly Barthelemy, Trustees of the Joseph Lynn Barthelemy and Elvira Lilly Barthelemy 2002 Family Trust; James S. Bennett and Carolyn D. Bennett, Trustees of the Bennett Family Trust; Sumeet Bhatia and Michael McDonald; John Joseph Broesamle and Katharine Sue Broesamle, Trustees of the Broesamle Family Trust; Richard Aaron Carlson, Trustee of the Richard Aaron Carlson Trust and Michelle Larson, Trustee of the Michelle Larson Family Trust; Thomas D. Carver and Cynthia L. Carver; Dana Cenicerros, Trustee of the Dana and Dawn Cenicerros Revocable Living Trust; Deborah Lys Martin Crawford; Frank Clay Creasey Jr.; Debra Joy Reed, Trustee of The Debra Joy Reed Revocable Trust Dated November 3, 1994; Frederic Devault; Diana Syvertson, Trustee of the Diana Syvertson Living Trust; Dive Deep L.L.C.; Douglas Roy Parent and Ann Marie Parent; William Erickson; Gelb Enterprises, L.P.; Jan Stephen Granade and Priscilla K. Granade, Trustees of the Granade Family Revocable Living Trust; Margot J. Griswold; Brian C. Haase and Marie Haase, Trustees of the B&M Haase Trust Dated October 8, 2019; Thomas Lann Harper and Jadona Collier-Harper; Ojai-Jackman L.L.C.; Kevin Rainwater and Marianne Ratcliff; Keith M. Nightingale and Victoria V. Nightingale, Trustees of The

1  
2  
3  
4  
5  
6  
7  
8  
9  
10  
11  
12  
13  
14  
15  
16  
17  
18  
19  
20  
21  
22  
23  
24  
25  
26  
27  
28

Nightingale Family Trust; Heide C. Kurtz, Trustee of The Kurtz Family Trust Dated January 19, 2019; Randall Leavitt, Trustee of The Randall B. Leavitt 2010 Trust; Edward C. Leicht and Jacqueline M. Leicht, Trustees of The Leicht Family 2013 Revocable Trust Dated March 1, 2013; Paul Lepiane and Bengtson Bo; Robert Levin and Lisa Solinas, Trustees of The Levin Family Living Trust; Francis Longstaff and Shauna Longstaff, Trustees of The Longstaff Trust Dated October 11, 2018; Mandy Macaluso, Trustee of The Living Trust of Mandy Macaluso; Marilyn Wallace, Trustee of The Marilyn Wallace Separate Property Trust; Daniel J. McSweeney and Yoko McSweeney; Wendell M. Mortensen and Laura L. Mortensen, Trustees of The Mortensen Family Revocable Trust; Timothy Jerome Murch and Jody Caren Murch, Trustees of The Jodim Family 2007 Trust Dated July 31, 2007; Chris E. Platt and Hanh H. Platt; Robert Erickson, Trustee and Ronald Wilson; Michael D. Robertson and Kimberly A. Robertson, Trustees of The Robertson Family Trust; James P. Robie, Trustee of the Robie Family Trust; Petter Romming and Kimi Romming, Trustees; Marc Saleh, Trustee of The Saleh Family Trust; Konrad Stefan Sonnenfeld, Trustee of The Konrad Stefan Sonnenfeld Living Trust; Mark Sutherland, Trustee of The Sutherland Marital Trust; John H. Thacher and Caroline H. Thacher, Trustees of The Thacher Family Trust Dated January 2004; Gilbert G. Vondrisk and Carolyn J. Vondrisk, Trustees of The Vondrisk Living Trust; William D. Rusin, Sr., Trustee of the William D. Rusin Sr. Revocable Trust; Oscar D. Acosta, Trustee of the Acosta Trust; Chris E. Platt and Hanh H. Plat; Deborah Lys Martin Crawford; Diane Syvertson, Trustee of the Diana Syvertson Living Trust; Erica J. Abrams, Trustee of the Erica J. Abrams Trust; Frank Clay Creasey Jr.; Frederic DeVault; Gilbert G. Vondrisk and Carolyn J. Vondrisk, Trustees of the Vondrisk Living Trust; James P. Robie, Trustee of the Robie Family Trust; John H. Thacher and Caroline H. Thacher, Trustees of the Thacher Family Trust dated January 2004; Mandy Macaluso, Trustee of the Living Trust of Mandy Macaluso; Margot J. Griswold; Mark Sutherland, Trustee of the Sutherland Marital Trust; Randall Leavitt, Trustee of the Randall B. Leavitt 2010 Trust; Raul E. Alvarado and Hildegard M. Alvarado, trustees

1  
2  
3  
4  
5  
6  
7  
8  
9  
10  
11  
12  
13  
14  
15  
16  
17  
18  
19  
20  
21  
22  
23  
24  
25  
26  
27  
28

William G. Short, Esq.  
Law Offices of William G. Short  
Post Office Box 1313  
Ojai, California 93024-1313  
Tel: (805) 490-6399  
Fax: (805) 640-1940  
billshortesq@me.com

Attorney for Cross-Defendant Robin Bernhoft

Robert N. Kwong  
Dennis O. La Rochelle  
Arnold Larochelle Mathews Vanconas &  
Zirbel, LLP  
300 Esplanade Dr Ste 2100  
Oxnard, CA 93036  
Tel: (805) 988-9886  
rkwong@atozlaw.com

Attorneys for Cross-Defendant Casitas  
Municipal Water District

of the Alvarado Family Trust; Sumeet Bhatia  
and Michael McDonald; Timothy Jerome  
Murch and Jody Caren Murch, Trustees of the  
Jodim Family 2007 Trust dated July 31, 2007;  
Wendell M. Mortensen and Laura L.  
Mortensen, Trustees of the Mortensen Family  
Revocable Trust; Petter Romming and Kimi  
Romming, Trustees; William Armstrong and  
April Nardini; William Erickson; Rancho  
Sueño, LLC  
Anthony Lee Francois  
Briscoe Ivester & Bazel LLP  
235 Montgomery Street, Suite 935  
San Francisco, CA 94104  
Tel: (415) 402-2707  
Fax (415) 398-5630  
tfrancois@briscoelaw.net

Attorney for Cross-Defendant Robin Bernhoft

Patrick Loughman  
Cristian Arrieta  
Lowthorp, Richards, McMillan, Miller &  
Templeman  
300 Esplande Drive, Suite 850  
Oxnard, CA 93036  
Tel: 805.804.3848  
Ploughman@lrmmt.com  
Carrieta@lrmmt.com

Attorneys for Cross-Defendants Ernest Ford,  
Tico Mutual Water Company, and Betty  
Withers and Betty Bow Withers Trust



1 Gregory J. Patterson  
2 William W. Carter  
3 Musick, Peeler & Garrett LLP  
4 2801 Townsgate Road, Suite 200  
5 Westlake Village, CA 91361  
6 Tel: (805) 418-3103  
7 Fax: (805) 418-3101  
8 g.patterson@musickpeeler.com  
9 w.carter@musickpeeler.com

6 Attorneys for Cross-Defendants Robert C.  
7 Davis, Jr.; James Finch; Topa Topa Ranch &  
8 Nursery, LLC; The Thacher School; Thacher  
9 Creek Citrus, LLC; Ojai Oil Company; Ojai  
10 Valley School; Sharon Hamm-Booth and  
11 David Robert Hamm, Co-Trustees of The  
12 Hamm 2004 Family Trust Dated April 29,  
13 2004; Reeves Orchard, LLC; and Ojai Valley  
14 Inn, Edward J. Conner, Edward J. Conner,  
15 Trustee of the Edward J. Conner Trust, Roe  
16 56; Friend's Ranches, Inc.; Finch Farms,  
17 LLC; Red Mountain Land & Farming, LLC;  
18 James Finch, Trustee of the Finch Family  
19 Trust

14 Jeanne Zolezzi  
15 Herum Crabtree Suntag  
16 5757 Pacific Avenue, Suite 222  
17 Stockton, CA 95207  
18 Tel: (209) 472-7700  
19 Fax: (209) 472.7986  
20 jzolezzi@herumcrabtree.com

18 Attorneys for Cross-Defendants Meiners Oaks  
19 Water District and Ventura River Water  
20 District

Lindsay F. Nielson  
Law Office of Lindsay F. Nielson  
845 E Santa Clara Street  
Ventura, CA 93001  
Tel: 805-658-0977  
nielsonlaw@aol.com

Attorneys for Cross-Defendant Meiners Oaks  
Water District, Ventura River Water District,  
and Jean Marie Webster, Trustee of The  
Roger E. and Jean Marie Webster Trust

Neal P. Maguire  
Ferguson Case Orr Patterson LLP  
1050 South Kimball Road  
Ventura, CA 93004  
Tel: (805) 659-6800  
nmaguire@fcoplaw.com

Attorneys for Cross-Defendants Rancho  
Matilija Mutual Water Company; Bettina  
Chandler, Trustee of the Bettina Chandler  
Trust; Martin Gramckow and Linda  
Gramckow individually; Martin Gramckow,  
Trustee of the Monika G. Huss Irrevocable  
Trust, Trustee of the Karin W. Gramckow  
Irrevocable Trust, and Trustee of the Kurt J.  
Gramckow Irrevocable Trust

1 Thomas S. Bunn III  
2 Elsa Sham  
3 Lagerlof Senecal Gosney & Kruse LLP  
301 N. Lake Avenue, 10th Floor  
4 Pasadena, CA 91101-5123  
Tel.: (626) 793-9400  
5 Fax: (626) 793-5900  
tombunn@lagerlof.com  
esham@lagerlof.com

6 Attorneys for Cross-Defendant St. Joseph's  
7 Associates of Ojai, California, Inc. and St.  
8 Joseph's Health and Retirement Center, Janis  
9 Long Nicholas, John Jay Nicholas, Jess Earl  
10 Long (aka Jess E. Long), Johana Rae Long,  
and Mary Margaret Long, Janis Long  
Nicholas and Jess E. Long as Trustees of the  
Long Family Trust

11 Jeffrey E. Barnes  
12 Chief Assistant County Counsel  
Jason Canger  
13 Assistant County Counsel  
Office of Ventura County Counsel  
14 800 South Victoria Avenue, L/C #1830  
Ventura, CA 93009  
15 Tel.: (805) 654-2879  
Fax: (805) 654-2185  
jason.canger@ventura.org

16 Attorneys for Cross-Defendants  
17 Ventura County Watershed Protection District  
18 and County of Ventura

19 Joseph C. Chrisman  
20 Hathaway, Perrett, Webster, Powers,  
Chrisman & Gutierrez  
21 5450 Telegraph Road  
Ventura, CA 93003  
22 (805) 644-7111  
jchrisman@hathawaylawfirm.com

23 Attorneys for Cross-Defendant Wood-  
24 Claeysens Foundation

Michael J. Van Zandt  
Nathan A. Metcalf  
Sean G. Herman  
Hanson Bridgett LLP  
425 Market Street, 26 Floor  
San Francisco, CA 94105  
Tel: 415-777-3200  
Fax: 415-541-9366  
mvanzandt@hansonbridgett.com  
nmetcalf@hansonbridgett.com  
sherman@hansonbridgett.com

Attorneys for Cross-Defendant Ventura  
County Watershed Protection District and  
County of Ventura

Scott Slater  
Bradley Herrema  
Christopher Guillen  
Brownstein Hyatt Farber Schreck LLP  
1021 Anacapa Street, 2nd Floor  
Santa Barbara, CA 93101  
Tel: (805) 963-7000  
Fax: (805) 965-4333  
sslater@bhfs.com  
bherrema@bhfs.com  
cguillen@bhfs.com

Attorneys for Cross-Defendant The Wood-  
Claeysens Foundation

Jeffrey M. Oderman  
Douglas J. Dennington  
Jeremy N. Jungreis  
Rutan & Tucker, LLP  
611 Anton Boulevard, Suite 1400  
Costa Mesa, CA 92626-1931  
Tel: 714-641-5100  
Fax: 714-546-9035  
joderman@rutan.com  
ddennington@rutan.com  
jjungreis@rutan.com

Attorneys for Cross-Defendant Casitas  
Municipal Water District

Thomas E. Jeffry  
Debra J. Albin-Riley  
Arent Fox LLP  
555 West Fifth Avenue, 48th Floor  
Los Angeles, CA 90013-1065  
(213) 629-7400  
(213) 629-7401  
Thomas.jeffry@arentfox.com

Attorneys for Cross-Defendant Community  
Memorial Health System

Jennifer T. Buckman  
Andrew J. Ramos  
Holly Jacobson  
Bartkiewicz Kronick & Shanahan, PC  
1011 Twenty-Second Street  
Sacramento, CA 95816-4907  
Tel. (916) 446-4254  
Fax (916) 446-4018  
jtb@bkslawfirm.com  
hjj@bkslawfirm.com

Attorneys for Cross-Defendant City of Ojai

Eric J. Schindler  
Michelle J. Berner  
Kroesche Schindler LLP  
2603 Main Street, Suite 200  
Irvine, CA 92614  
Tel. (949) 387-0495  
Fax (888) 588-0034 Fax  
eschindler@kslaw.legal  
mberner@kslaw.legal

Attorneys for Cross-Defendant Oak Haven,  
LLC

Adam D. Wieder  
Barry C. Groveman  
Ryan Hiete  
Groveman Hiete LLP  
35 East Union Street, Suite B  
Pasadena, CA 91103  
Tel (626) 747-9383  
Fax (626) 747-9370  
awieder@grovemanhiete.com  
bgroveman@grovemanhiete.com  
rhiete@grovemanhiete.com

Attorneys for Cross-Defendant Michael  
Bradbury; Heidi Bradbury; and The Heidi  
Gramkow Trust

Andrew Brady  
DLA Piper LLP (US)  
550 South Hope Street, Suite 2400  
Los Angeles, CA 90071-2618  
Tel. (213) 330-7700  
Fax: (213) 330-7701  
andrew.brady@us.dlapiper.com

Attorneys for Cross-Defendant Integritas Ojai,  
LLC

David R. Krause-Leemon  
BEAUDOIN & KRAUSE-LEEMON LLP  
15165 Ventura Blvd., Suite 400  
Sherman Oaks, CA 91403  
Tel. (818) 205-2809  
Fax (818) 788-8104  
david@bk-llaw.com

Attorneys for Cross-Defendant RDK Land,  
LLC

Brian A. Osborne  
Osborne Law Firm  
674 County Square Drive, Suite 308  
Ventura, CA 93003  
Tel. (805) 642-9283  
Fax (805) 642-7054  
osbornelawyer@gmail.com

Attorney for Cross-Defendants Brian A.  
Osborne; Ronald W. Rood and Susan B.  
Rood, Trustees of the Rood Family Trust

Peter A. Goldenring  
Mark R. Pachowicz  
Pachowicz | Goldenring A Professional Law  
Corporation  
6050 Seahawk Street  
Ventura, CA 93003-6622  
Tel. (805) 642-6702  
Fax (805) 642-3145  
attorneys@gopro-law.com  
peter@gopro-law.com  
mark@pglaw.law

Attorneys for Cross-Defendant The Manfred  
Krankl and Elaine V. Krankl Living Trust

Ernest J. Guadiana  
Elkins Kalt Weintraub Reuben Gartside LLP  
10345 W. Olympic Boulevard  
Los Angeles, CA 90064  
Tel. (310) 746-4425  
eguadiana@elkinskalt.com

Attorneys for Michael Lombardo and Charles  
L. Ward III, as Co-Trustees of the Ward-  
Lombardo Living Trust

Karen A. Feld  
Daniel S. Roberts  
Cole Huber LLP  
3401 Centrelake Drive, Suite 670  
Ontario, CA 91761  
Tel: (909) 230-4209  
Fax: (909) 937-2034  
kfeld@colehuber.com  
droberts@colehuber.com

Attorneys for Cross-Defendant Ventura  
Unified School District

David A. Ossentjuk  
Ossentjuk & Botti  
2815 Townsgate Road, Suite 320  
Westlake Village, CA 91361  
Tel: (805) 557-8081  
Fax: (805) 456-7884  
DOssentjuk@oandblawyers.com

Hermitage Mutual Water Company, and Santa  
Ana Ranch, Inc.

Attn: J. Roger Essick  
2955 Hermitage Road  
Ojai, CA 93023  
Tel. (805) 320-1406  
rogeressick@gmail.com

Attorney for Cross-Defendant Robert Martin

Julie A. Baker  
2193 Maricopa Hwy  
Ojai, CA 93023  
(805) 646-8700  
Jandjbaker2@gmail.com

The Joseph Fedele 1995 Living Trust,  
Oriana Marie Fedele, Trustee  
Attn. Oriana Fedele  
P.O. Box 298  
Lahaina, HI 96767  
Tel. (818) 601-3161  
orianafedele@gmail.com

T&D Nevada Trust  
Dennis and Antoinette Mitchell  
Mitchell Homes Inc.  
P.O. Box 360  
Ojai, CA 93024  
(805) 340-2890  
amitc74383@aol.com

Michaela Boehm  
12293 topa Lane  
Santa Paula, CA 93060  
Tel. (323) 493-3737  
micboehm@me.com

1 Anthonie M. Voogd  
2 918 Palomar Road  
3 Ojai, CA 93023  
4 Tel. (805) 646-1512  
5 avoogd@stanfordalumni.org

6 Heather Blair  
7 556 So. Fair Oaks Ave., Ste 101  
8 Box 356  
9 Pasadena, CA 91105  
10 Tel. (626) 755-6566  
11 Hblair1946@gmail.com

12 Robert K. Cartin  
13 Cartin Family LLC  
14 505 Estremoz Ct.  
15 Oceanside, CA 92057  
16 Tel. (760) 429-4738  
17 bob.cartin@dvm.com

18 Del Cielo LLC  
19 Attn. Tim Carey, Managing Member  
20 22410 Hawthorne Boulevard, Suite 5  
21 Torrance, CA 90505  
22 Tel. (310) 787-6569  
23 tim@calvoterguide.com

24 Janice and Jesse Hillestad  
25 9611 N. Ventura Ave.  
26 Ventura, CA 93001  
27 Tel. (310) 614-8438  
28 janicehillestad@icloud.com  
jessehillestad@gmail.com

Carlos A Mejia  
Sophie A Wenzlau  
Department of Justice  
1300 I Street, Suite 125  
P.O. Box 944255  
Sacramento, CA 94244-2550  
Tel. (916) 210-6379  
Fax: (916) 327-2319  
sophie.wenzlau@doj.ca.gov  
carlos.mejia@doj.ca.gov

Attorneys for California Department of Parks  
and Recreation

Lawrence S. Mihalas  
Trustees of the Mihalas Family Trust  
419 21<sup>st</sup> Place  
Santa Monica, CA 90402  
Tel. (310) 739-0700  
lmihalas@gmail.com  
lmihalas@ucla.edu

Martin Hartmann  
Whitney Hartmann  
430 S. Carrillo Road  
Ojai, CA 93023  
Tel. (805) 798-2253  
earthbuilding@gmail.com

Loa E. Bliss  
Loa E. Bliss 2006 Revocable Trust  
9030 Ojai Santa Paula Road  
Ojai, CA 93023  
Tel: (617) 750-8500  
loabliss@hotmail.com

Joyce Syme, and  
The Joyce A. Syme Living Trust  
1760 Ocean Avenue  
Santa Monica, CA 90401  
Tel. (310) 403-1760  
seaviewmotel@hotmail.com

Dale and Patricia Givner  
12617 Koenigstein Rd.  
Santa Paula, CA 93060  
Tel. (805) 525-9524  
dalegivner@gmail.com

Dennis and Nadine Corte  
12812 MacDonald Drive  
Ojai, CA 93023  
Tel. (805) 701-1950  
dwcorte@outlook.com

Jacob Slujter  
Rabindra Singh  
1070 McAndrew Road.  
Ojai CA 93023; Tel.  
(805) 646-2726  
ED@KFA.ORG

In Propria Persona for Krishnamurti  
Foundation of America

Kelton Lee Gibson  
878 Oak Grove Court  
Ojai, CA 93023  
Tel. (805) 701-9318  
kgibson@mwglaw.com  
kgibson878@gmail.com

Kelton Lee Gibson, Trustee of the Gibson  
Family Trust, dated June 6, 2006

Rebecca C. Collins  
Thomas M. Collins, Jr.  
241 Longhorn Lane  
Ojai, CA 93023  
Tel. 805-312-5894  
tominojai@gmail.com  
collinst3@sbcglobal.net

Claude R. and Patricia E. Baggerly  
119 S. Poli Avenue  
Ojai, CA 93023-2144  
Tel. (805) 646-0767  
Tel. (805) 766-7317  
russ.baggerly65@gmail.com

David R. Greifinger  
Law Offices of David R. Greifinger  
15515 West Sunset Blvd., No. 214  
Pacific Palisades, CA 90272  
Tel. (424) 330-0193  
tracklaw@me.com

Attorney for Cross-Defendants Danny Everett  
and Tiarzha Talyor

George and Sigrid Bressler  
340 Longhorn Lane  
Ojai, CA 93023  
Tel. (805) 646-1221  
andybsail@gmail.com

Peter Duchesneau  
Sigrid R Waggener  
Mannat, Phelps & Phillips, LLP  
One Embarcadero Center, 30<sup>th</sup> Floor  
San Francisco, CA 94111  
Tel (415) 291-7400  
Fax (415) 291-7474  
pduchesneau@manatt.com  
swaggener@manatt.com

Attorneys for Cross-Defendant Aera Energy,  
LLC

Judith L. Mercer  
c/o of Jason Goldman  
Mercer Family Trust Agreement of 1992  
1175 Grand Avenue  
Ojai, CA 93023  
Tel. (310) 625-7795  
jgoldman@begroup.com

Henry D. Finkelstein  
Brian Moskal  
Greenberg Glusker Fields Claman &  
Machtiger LLP  
2049 Century Park East, Suite 2600  
Los Angeles, CA 90067  
Tel. (310) 553-3610  
Fax (310) 553.0687  
hfinkelstein@ggfirm.com  
bmoskal@greenbergglusker.com

Attorneys for Ginnetti Living Trust, and  
Baldwin Ranch, LLC

<p>1 Harry D. Sims and Raymond P. Sims  2 P.O. Box 1870  3 Ojai, CA 93024  4 Tel. (805) 646-0167  5 1978simsfamilytrust@gmail.com</p>	<p>Tiernan Dolan  995 Riverside St.  Ventura, CA 93001  tdolan@hacityventura.org</p> <p>Attorney for Cross-Defendants Housing  Authority of the City of San Buenaventura,  Triad Properties, Inc., Encanto Del Mar  Apartments, L.P., Villages at Westview I LP,  Vista Del Mar Commons, LP, and Soho  Associates, L.P.</p>
<p>7 Andrew K. Whitman  8 821 N. Signal Street  9 Ojai, CA 93023  10 Tel. (805) 444-5671  11 sfreberg@scr-legaliner.com</p>	<p>Christopher Danch  16200 Maricopa Highway  Ojai, CA 93023  Tel. (805) 640-8534  chrisdanch@gmail.com</p>
<p>12 In pro per and Atty for Cross-Defendants  13 Andrew K. Whitman and Heidi A. Whitman;  14 Nancy L. Whitman; John R. Whitman and  15 Nancy L. Whitman Family Trust</p>	<p>Attorney for Cross-Defendants Angie Marie  Genasci and Christopher Paul Danch, Trustees  of the Genasci-Danch Family Trust; and  Donald and Wendy Givens</p>
<p>17 Paul R. Huff  18 The Huff Law Firm APC  19 21 S. California Street, Suite 205  20 Ventura, CA 93001  21 Tel. (805) 667-8940  22 Fax (805) 850-7399  23 phuff@hufffirm.com</p>	<p>Alessandro (Alex) Lobba  Alessandro Lobba and Mary E. Jackson,  individually as Trustees of the Lobba-Jackson  Family Trust  947 Casitas Vista Road  Ventura, CA 93001  Tel. (805) 895-7056  alobba@gmail.com</p>
<p>24 Attorneys for Barnard Properties, LLC</p>	
<p>27 Christine Steiner  28 2560 Ladera Road  Ojai, CA 93023  Tel. (31) 600-3220  csteiner@csteinerlaw.com</p>	<p>William Slaughter  Slaughter, Reagan &amp; Cole, LLP  625 East Santa Clara Street, Suite 101  Ventura, CA 93001  Tel. (805) 658-7800  Fax (805) 644-2131  slaughter@srllplaw.com</p>
	<p>Attorneys for The Boyd S. Dron and Karin  Dron Joint Living Trust, and Sisar Mutual  Water Company</p>
<p>31 Julia Taft-Whitman, President CEO  32 Taft Corporation'  33 111 West Topa Topa Street  34 Ojai, CA 93023  35 Tel. (805) 794-2837  36 juliawhitman@gmail.com</p>	<p>Jaide Whitman, President  Julia Whitman, Director  Conservation Endowment Fund  P.O. Box 6  Oak View, CA 93022  Tel. (805) 649-2333  Tel. (805) 804-7005  jaide.whitman@gmail.com  TaftGardensOffice@gmail.com</p>

1 Kelley M. Rasmussen, Trustee  
2 2420 Park Road  
3 Lake Oswego, OR 97034  
4 Tel. (805) 798-7125  
5 kelleyras@gmail.com

6 William E. Colborn, Jr.  
7 13183 Ojai Road  
8 Santa Paula, CA 93060  
9 Tel. (805) 795-1909  
10 jake@colbornandassociates.com

11 Joshua Beckman  
12 913 Oso Road  
13 Ojai, CA 93023  
14 Tel. (323) 404-0465  
15 joshbfbp@gmail.com

16 Robert L. Smith  
17 12777 Tree Ranch Road  
18 Ojai, CA 93023  
19 Tel. (805) 558-6322  
20 treeranch@ymail.com

21 Robin Schwartzburd  
22 411 Franklin Drive  
23 Ojai, CA 93023  
24 Tel. (805) 272-5877  
25 robin.schwartzburd@gmail.com

26 Malinda K. Vaughn  
27 Mitchell B. Vaughn  
28 12283 Ojai Santa Paula Road  
Ojai, CA 93023-9323  
Tel. (805) 890-6616  
vaughnmb@aol.com

Jennifer Jordan Day and Joel Fox  
909 North Rice Road  
Ojai, CA 93023  
Tel. (213) 321-5253  
jenniferjordanday@gmail.com

Angela Small Booth, Attorney  
2175 Valley Meadow Drive  
Oak View, CA 93022  
Tel. (805) 765-5413  
angie@angiesmall.org

Rebecca Tickell  
350 Verano Drive  
Ojai, CA 93023  
Tel. (323) 559-5700  
rebecca@bigpictureranch.com

Gregg S. Garrison  
Garrison Law Corporation  
12986 MacDonald Drive  
Ojai, CA 93023  
Tel. (650) 726-1111 / Fax: (805) 669-3168  
gsgarrison@garrisonlawcorp.com

Attorney for Cross-Defendants Gregg S.  
Garrison, Rosanna Garrison, and Emily V.  
Brown, Trustee of The Restated Emily V.  
Brown Intervivos Trust, Roe 37

Susan M. Glennon  
292 Cruzero Street  
Ojai, CA 93023  
Tel. (805) 646-4816  
theglennonnest@aol.com

Melinda Hass  
11947 Koenigstein Road  
Santa Paula, CA 93060  
Tel. (213) 713-4360  
mlynnbooking@gmail.com

Rebecca D. Schwermer  
P. O. Box 174  
Santa Paula, CA 93061  
Tel. (805) 551-3494  
octoberbabies2@verizon.net

Brigitte Lovell, Trustee of Lovell Living Trust  
295 Encino Drive  
Oak View, CA 93022  
Tel. (915) 227-9412  
loveb9@gmail.com



Catherine Ferro &  
Catherine Eileen Ferro Inter Vivos Trust  
312 Montana Road  
Ojai, CA 93023  
Tel. (805) 326-1686  
cepharoah@gmail.com

Susan Capper  
12870 Tree Ranch Road  
Ojai, CA 93023  
Tel. (805) 794-6421  
chelsue@aol.com

Joyce L. Heath  
Joyce Heath, Trustee of the Heath Family  
Living Trust,  
P.O. Box 1323  
Ojai, CA 93024  
Tel. (805) 290-6231  
mamaheath55@gmail.com

Ronald W. Bowman  
Trustee of the Bowman Trust dated April 8,  
2011  
672 W. Villanova Road  
Ojai, CA 93023  
Tel. (805) 732-4014  
ron@l-binc.com

Amy Hueppe  
1025 Moreno Drive  
Ojai, CA 93023  
Tel. (310) 699-4619  
amychueppe@gmail.com

Harry Anthony Williams  
915 Daly Road  
Ojai, CA 93023  
Tel. (661) 609-1253  
Tel. (805) 794-6922  
awilliam@me.com

Susan C. White  
Steven J. White  
2 Shorewood Drive  
Bellingham, WA 98225  
Tel. (425) 891-9249  
curranwhite1@hotmail.com

Lindy & Karen C. Goetz  
12338 Linda Flora  
Ojai, CA 93023-9721  
Tel. (805) 649-2526; (805) 794-2312  
lindygoetz@roadrunner.com

Thomas M. German  
301 N. Drown Avenue  
Ojai, CA 93023  
Tel. (805) 646-2130  
kittycatgirl214@gmail.com

Andrew P. Byrne, Esq.  
1140 Highland Avenue, Ste. 250  
Manhattan Beach, CA 90266  
Tel. (310) 505.7170  
Andy@ByrneLaw-LA.com

Attorney for Cross-Defendant Roman  
Catholic Archdiocese of Los Angeles, a sole  
corporation

Glenn Bator  
338 Montana Road  
Ojai, CA 93023  
Tel. (805) 798-1802  
denibator@aol.com

Bryan M. Sullivan, Esq.  
EARLY SULLIVAN WRIGHT GIZER &  
McRAE LLP  
6420 Wilshire Boulevard, 17<sup>th</sup> Floor  
Los Angeles, CA 90048  
Tel. (323) 301-4660  
bsullivan@earlysullivan.com

Attorneys for Cross-Defendant  
Jeff Bacon as Trustee of the Villa Nero Trust  
Dated January 25, 2000

David L. Osias, Esq.  
Allen Matkins Leck Gamble Mallory & Natsis  
LLP  
One America Plaza  
600 West Broadway, 27<sup>th</sup> Floor  
San Diego, CA 92101-0903  
Tel. (619) 233-1155  
Fax (619) 233-1158  
dosias@allenmatkins.com

Laura M. Peakes  
John E. Peakes, Jr.  
316 Verano Drive  
Ojai, CA 93023  
Tel. (805) 402-0249  
jpeakesjr@aol.com

Attorneys for Cross-Defendant  
Jeff Bacon as Trustee of the Villa Nero Trust  
Dated January 25, 2000

Kelsey Klein  
Paula Kee  
1042 Fairview Road  
Ojai, CA 93023  
Tel. (805) 640-5154  
kelseyklein88@gmail.com

Laura R. Schreiner, a.k.a Laura Rearwin  
418 Crestview Drive  
Ojai, CA 93023  
Tel. (805) 479-5400  
laura@rearwin.com

Paul J. Deneen  
12170 Ojai Santa Paula Road  
Ojai, CA 93023-9358  
Tel. (805) 218-0211  
paul@carbide.com

Jennifer Carafelli  
Robin Schwartzburd  
211 Village Commons Boulevard, No. 21  
Camarillo, CA 93012  
Tel. (805) 340-2540  
carafelli@gmail.com

Timothy Mahoney  
10244 Ojai Santa Paula Road  
Ojai, CA 93023  
Tel. (323) 252-3309  
honedog@mac.com

Thomas Adams  
Adams & Associates  
21781 Ventura Boulevard, Suite 10005  
Woodland Hills, CA 93003  
Tel. (805) 229-1529  
tom@adamsassoc.com

Attorneys for Cross-Defendant 235 La Luna  
Owners, an unincorporated association

Salvatore Scarpato  
106 Calhoun Lane  
Georgetown, TX 78633  
Tel. (805) 797-8767  
salscarpato@att.net

Robert Kyle  
The Robert Kyle Living Trust  
715 Sunset Place  
Ojai, CA 93023  
Tel. (626) 260-5509  
robertkyle61@gmail.com

William R. Thatcher  
12195 Linda Flora Drive  
Ojai, CA 93023-9723  
thelostplanetairmen@yahoo.com

David Bishop  
Sophie Loire  
Tel. (805) 403-5370  
frenchiephotos@yahoo.com

Chet Hilgers  
Mellanie Hilgers  
mellaniehilgers@gmail.com

Stephanie Gustafson  
Tel. (805) 646-1423  
sgustafson@ovs.org

Kristi Schoeld  
Neil Jorgensen  
Tel. (805)272-8360  
neilkristi@googlemail.com

Robert Turnage  
9902 Sulphur Mountain Road  
Ojai, CA 93023  
Tel. (916) 837-3907  
Robert.turnage@sbcglobal.net

Authorized Representative for Cross-Defendant Meher Mount Corporation

Linda J.G. MacDougall, Trustee of The Linda J.G. MacdDugall Living Trust  
Marsha Kee Strong-Chandler  
Richard Holt Robinson  
119 E. Channel Islands Blvd.  
Port Hueneme, CA 93041  
(805) 202-6379  
speakerholistic@gmail.com

Gerrold Grigsby  
Karen Grigsby  
9799 Ojai Santa Paula Road  
Ojai, CA 93023  
Tel. (805) 649-1624  
grigsbyranch@gmail.com

James A. Vickman  
Vickman & Associates  
424 South Beverly Drive  
Beverly Hills, CA 90212  
Tel. (310) 553-8533  
Fax (310) 553-0557  
jv@vickmanassociates.com

Nancy J. Johnson  
Berliner Cohen LLP  
10 Almaden Blvd., 11<sup>th</sup> Floor  
San Jose, CA 95113  
Tel. (408) 286-5800  
Fax (408) 998-5388  
Nancy.Johnson@berliner.com

Attorneys for Cross-Defendant New Civilization, a California corporation

Attorneys for Cross-Defendant Union Pacific Railroad Company, a Delaware corporation – Roe 411

Claire S. Brian and Brad D. Brian, Trustees of the Brad & Claire Brian Living Trust, Roes 30 and 31  
1150 So Arroyo Blvd.  
Pasadena, CA 91105  
cbrian8587@gmail.com  
brad.brian@mto.com

Michael W. Price, Trustee of the Michael W. Price Trust, Roe 197  
Leslie L. Clark, Trustee of the Leslie L. Clark Trust, Roe 51  
10886 Creek Rd  
Ojai, CA 93023  
michael@nomadgal.com  
leslie@nomadgal.com  
Thomas G. Gehring, Esq.  
Julia J. Park, Esq.  
Thomas G. Gehring & Associates, a Professional Corporation  
1534 17<sup>th</sup> Street, Suite 203  
Santa Monica, CA 90404  
Tel. (310) 264-7744  
Fax (310) 264-7746  
tom@tomgehring.com  
julia@tomgehring.com

Stacey Birchfield  
Double Vision Development, LLC  
1810 Miramar Drive  
Ventura, CA 93001  
Tel. (805) 340-0929  
stacey.birchfield@gmail.com

Attorneys for Cross-Defendant Teen Challenge of Southern California, Inc., a California nonprofit corporation

Erin E. Holebrook  
Jerald M. Montoya  
Steven J. Dadaian  
Erick L. Solares  
Julie Del Rivo  
Tucker Wisdom-Stack  
100 South Main Street, 1300  
Los Angeles, California 90012-3702  
Tel. (213) 687-6000  
Fax (213) 687-8300  
Tucker.Wisdom-Stack@dot.ca.gov

Tom Maloney  
Executive Director  
Ojai Valley Land Conservancy  
P.O. Box 1092  
Ojai, CA 93024  
Tel. (805) 649-6852 Ext. 1  
tom@ovlc.orgf

William Francis Tarantino  
Justin Fisch  
Morrison & Foerster LLP  
425 Market St. |  
San Francisco, CA 94105  
Tel. (415) 268-7850  
jfisch@mofo.com  
wtarantino@mofo.com

Attorneys for Ventura Land Trust

Christopher Stolz  
Valerie Levett  
11871 Koenigstein Rd.  
Santa Paula, CA 93060  
kitstolz@gmail.com

Kathleen Janetatos Smith, Trustee of the  
Smith Family 2020 Revocable Trust dated  
January 3, 2020, Roe 426  
Tel. (805) 844-2093  
kathismith@sbcglobal.net

Adam C. Kear  
1940 N. Saint Andrews Pl.  
Los Angeles, CA 90068  
Phone (323) 481-9392  
ackear@gmail.com

Attorney for Cross-Defendant Senior Canyon  
Mutual Water Company (co-counsel w/Ryan  
Blatz)

Amy Elmore  
110 Park Road  
Ojai, Ca 93023  
Tel. (805) 746-1551  
elmoreaw@gmail.com

Brandon Hansen  
P.O. Box 1516  
Oak View, CA  
Tel. (805) 207-1869  
brandon@weldo.com

Pro Per for Brandon Hansen, Jamie Hansen,  
Ralph Hansen, Landon Hansen, Sandra  
Hansen, Ojai Highlands LLC, BH Holding  
LLC, 403 Bryant LLC, and 401 Bryant LLC

Via First Class Mail

Via First Class Mail

Warren W. Greene  
Bonnie M. Greene  
958 E. Main Street  
Ventura, CA 93001  
Tel. (805) 652-1080  
Fax (805) 652-0400

Lewis A. Enstedt  
12617 Macdonald Drive  
Ojai, CA 93023  
(310) 613-3937

1  
2  
3  
4  
5  
6  
7  
8  
9  
10  
11  
12  
13  
14  
15  
16  
17  
18  
19  
20  
21  
22  
23  
24  
25  
26  
27  
28

I declare I under penalty of perjury under the laws of the State of California that the  
above is true and correct.

Executed on November 23, 2021 at Walnut Creek, California

  
\_\_\_\_\_  
Irene Islas